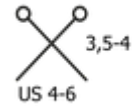
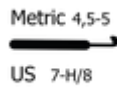
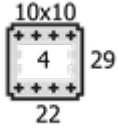


NATURAL BAG

ZUSAMMENSETZUNG: 60 % Jute, 40 % Baumwolle

KNÄUEL: € 100 gr. - 100 lfm.



Ein natürliches Garn aus Jute und Baumwolle, **Natural Bag** hat eine rustikale Textur, ideal für Häkelarbeiten zur Herstellung von Accessoires wie Taschen, Gürteln oder Wohnaccessoires.



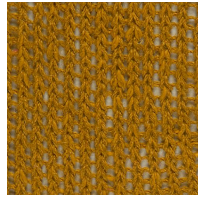
VERFÜGBARE FARBEN



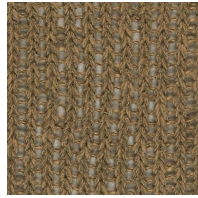
001



002



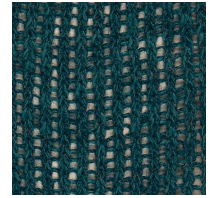
003



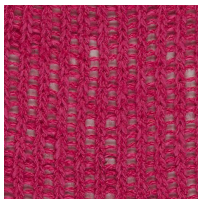
004



006



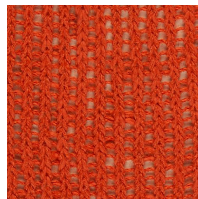
007



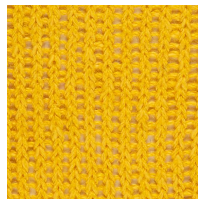
008



009



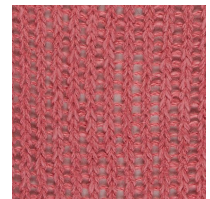
010



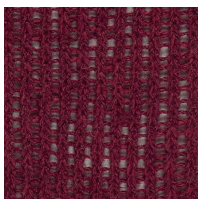
011



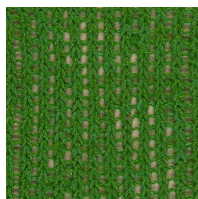
013



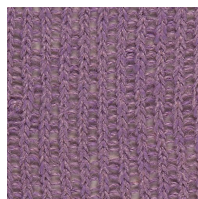
014



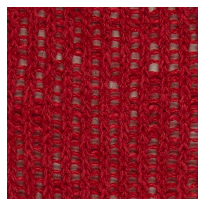
015



017



018



019



030



031



032

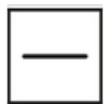


033



034

KLEIDUNGSPFLEGE



LIEGEND
TROCKNEN



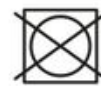
HANDWÄSCHE



CHEMISCHE
REINIGUNG MIT
PERCHLORETHYLEN



NICHT
BLEICHEN



TROCKNEN
IM
TUMBLER
NICHT
MÖGLICH



BÜGELN BEI
NIEDRIGER
TEMPERATUR
(MAX. 110
GRAD)