

SCHWIERIGKEIT = Mittelstufe



MUSTER

VERWENDETE MUSTER

ABKÜRZUNGEN

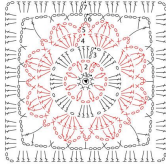
GRÖSSEN

ANLEITUNG

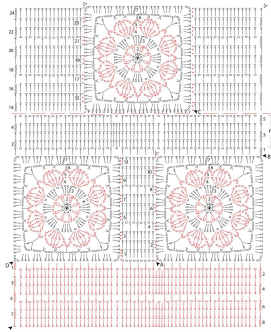
FOTOGALERIE



Schema 1: piastrella



Schema 2: merica



Legenda

- ▲ inizio
- △ fine
- cattedralla
- m. bassissima
- m. bassa
- mezza m. alta
- m. alta
- 2 cat e 1 m. alta chiuse ins. nella stessa m.
- 2 m. alte chiuse ins. nella stessa m.
- 3 m. alte chiuse ins.
- ↳ gruppo a Y