

**SCHWIERIGKEIT =**



MUSTER

VERWENDETE MUSTER

ABKÜRZUNGEN

GRÖSSEN

ANLEITUNG

FOTOGALERIE



Schema 1: davanti - dietro della borsa

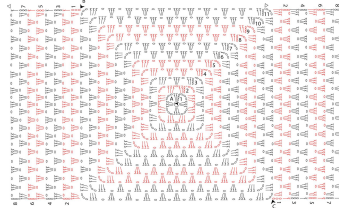
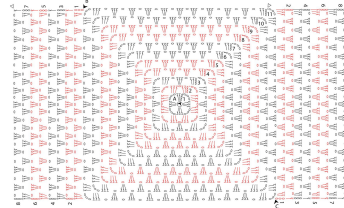


Diagram 1: front - back of the bag



Schema 2: laterali e fondo

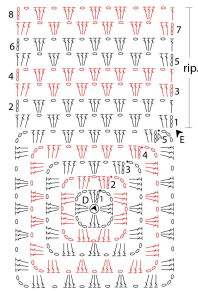
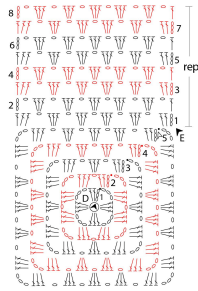


Diagram 2: sides and base



Legenda

- ▲ inizio
- △ fine
- catenella
- m. bassissima
- × m. bassa
- ┆ m. alta

Key

- ▲ beginning
- △ end
- chain stitch
- single crochet
- × double crochet
- ┆ treble crochet