

SCHWIERIGKEIT =



MUSTER

VERWENDETE MUSTER

ABKÜRZUNGEN

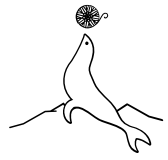
GRÖSSEN

ANLEITUNG

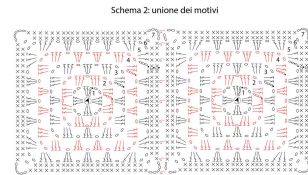
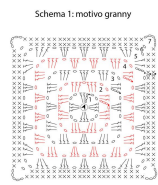
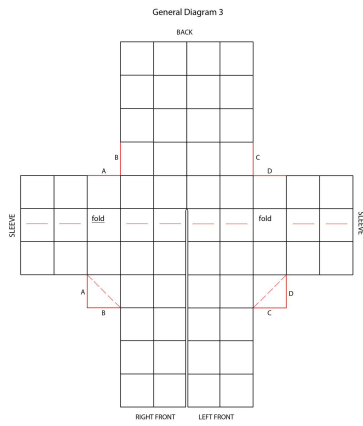
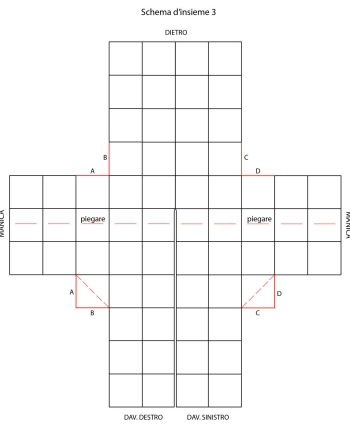
FOTOGALERIE







LAINES du NORD®



Legenda

- ▲ inizio
- ◻ fine
- catenella
- m. bassissima
- × m. bassa
- ↑ m. alta
- 1 m. alta, 1 mezzo m. alta e 2 m. alte nella stessa m.
- ◊ punto d'unione

Diagram 1: granny motif

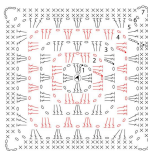
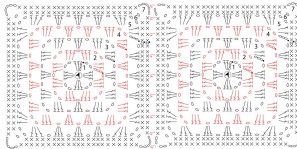


Diagram 2: joining the motifs



Key

- ▲ beginning
- ◻ end
- chain stitch
- single crochet
- × double crochet
- ↑ treble crochet
- 1 treble chochet, 1 half treble crochet and 2 treble crochet into the same base stitch
- ◊ joining point