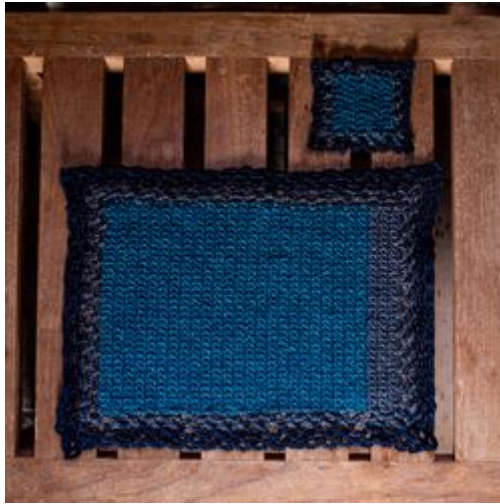


**SCHWIERIGKEIT =**



MUSTER

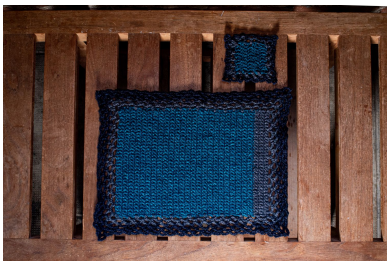
VERWENDETE MUSTER

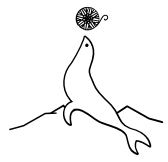
ABKÜRZUNGEN

GRÖSSEN

ANLEITUNG

FOTOGALERIE

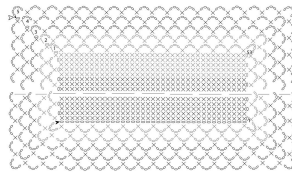




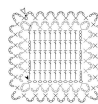
LAINES  
du NORD®



Schema 1: tovaglietta



Schema 2: sottobicchiere



Legenda

- ▲ inizio
- fine
- catenella
- m. bustolana
- × m. bassa
- 1 m. bassa, 5 cat. e 1 m. bassa nella stessa m.
- ⊥ mezza m. alta
- | m. alta