

PULL LIFESTYLE

DIFFICULTY =

YARN = [ARAN TWEED](#) by Laines du Nord, 4 balls of color 9 (ocher); 4 balls of color 7 (taupe); 2 balls of color 10 (orange)

NEEDLES = 6 mm and 7 mm

OTHER = tapestry needle, pins, scissors



POINTS USED

2/2 rib st: (multiple 4 sts)

1 Rw: (K2, P2) rep to the end.

2 Rw: work sts as they appear

Stocking st

1 Rw (RS): K

2 Rw (WS): P

Seed st:

1 Rw: (K1, P1) rep to the end

2 Rw (P1, K1) rep to the end

ABBREVIATIONS

st(s) = Stitch(es)

Rw = rows

K = knit
P = purl
SE = selvage sts
RS = right side
WS = wrong side
SM = Stitch marker
rep = repeat

MEASURES

SIZE: 40/42

PROCEDURE

BACK

With needles 6 mm and color orange cast 78 sts.

Work 6 rows in 2/2 rib st.

Change to needles 7 mmm.

Work in seed st for the next 22 cm

23 Rw (RS): set up: 2 sts in stocking st. with color ocher, 74 sts in seed st with color orange, 2 sts in stocking st. with color oche

24 Rw and eve rows (WS): work as they appear the stitches in stocking st and the other sts in seed st.

25 - 100 Rw: follow chart 1, changing colors in stocking st and seed st sections as shown.

101-106 Rw: work all sts in seed st with color taupe.

Now start shaping the neckline.

107 Rw: cast off the 27 central sts, and work separately the 2 sides.

108 Rw and even rows: work in seed st as set up

109 Rw: cast off 4 sts on neck side

111 Rw: cast off all sts in seed st.

Repeat the last 4 rows for the other side of the neck.

FRONT

Work as for the Back until 100 Rw.

Now start shaping neck and shoulders.

101 Rw: cast off the 22 central sts and work separately the 2 sides of the neckline.

102 Rw and even rows: work in seed st as set up.

103 Rw: cast off 3 sts on neckline side

105 Rw: cast off 2 sts on neckline side

107 and 109 Rw: cast off. 1 st on neckline side

111 Rw: cast off all sts in seed st.

Repeat the last 10 rows for the other side.

SLEEVES

With needles 6 mm and color ocher, cast on 44 sts.

Work 10 rows in 2/2 rib st.

Change to needles 7 mmm.

Work in stocking st and at the same increase 1 st each side on rows: 7, 13, 19, 29 and 39.

After the last increase row keep working with color ocher until 50 Rw.

Finish the sleeve following chart 2, change colors in stocking st and seed st sections as

shown.

67 Rv: cast off all sts in seed st.

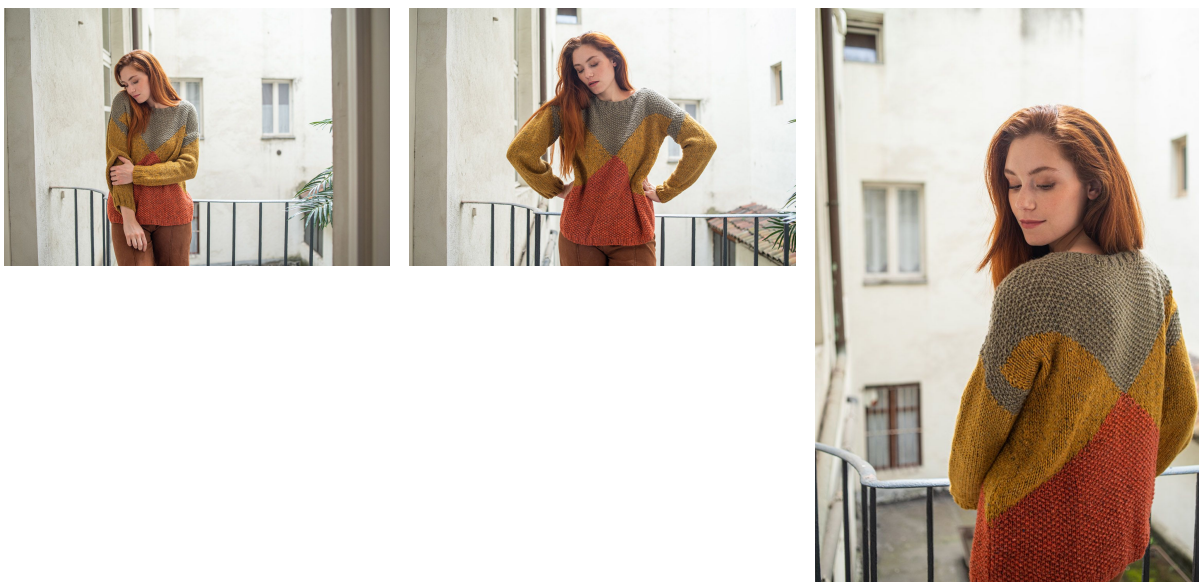
FINISHING

Sew one shoulder and with needles 6 mm, pick up along the neckline (back and front) 92 sts. Work 5 rows in 2/2 rib st.

6Rw: cast off all sts as they appear

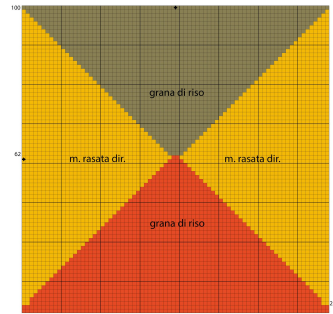
Sew the second shoulder and the neck sides. Sew the sides, leaving the armholes open, then sew sleeves.

PHOTOGALLERY





Schema 1: lavorazione a 3 colori (davanti e dietro)



Schema 2: lavorazione a 2 colori (maniche)



Legenda

- n.3
- n.10
- n.7