

SWEATER MATERA

DIFFICULTY =

YARN = [Matera](#) by Laines du Nord 50 gr/160 m

Main Color: 5 (5, 6, 7) balls (MC = cream, cod: 5)

Color 4: 2 (2, 2, 2) balls (C1 = blue, cod:)

Color 3: 1 (1, 1, 1) balls (C2 = pink, cod: 13)

Color 13: 1 (1, 1, 1) balls (C3 = light blue, cod: 3)

CIRCULAR NEEDLES = **3.5** and **4.5 mm** (cables 100 cm and 60 cm for sleeves)

OTHER = stitch markers, tapestry needle.



WORK chart in stocking st. (K all rounds).

Read the CHARTS from the bottom-up and from right to left.

This sweater is worked in the round from the top down, with circular yoke.

SAMPLE

22 stitches and 32 rows = 10 X10 cm in stocking st. with needles **4.5 mm**.

Adjust the needles size if it's needed to achieve the correct gauge.

POINTS USED

Stocking stitch;

2/2 rib st: All rounds: * K2, P2 * rep ** to the end.

ABBREVIATIONS

st(s) = stitch(es)

SM = stitch marker

SMb = stitch marker of the beginning of the round

sSM = slip SM

K = knit

P = purl

K2tog = knit 2 sts together

SKP = slip 1, K1, pass slipped stitch over

m1 = make one by picking up one a loop between two stitches and knitting into the back of the new stitch

MC = main color; **C1** = color 1; **C2** = color 2; **C3** = color 3.

rep ** = repeat from * to *

MEASURES

SIZES - S (M,L)

MEASURES OF THE FINISHED GARMENT: Size in photos: M

Bust circumference: 100 cm

Total length: 56 cm

Length from underarm to hem: 32 cm

Sleeve circumference: 32 cm

Sleeve length from underarm: 38 cm

PROCEDURE

YOKE

Sizes S (M, L, XL)

With **needles 3.5 mm** and **C1** cast on 112 (112, 120, 128) 1 sts, insert the marker to mark beginning of row, **SMb**, and start to work in the round ensuring that the work is not twisted (to join in the round: Ktog the first and the last cast-on stitch). [= 112 (112, 120, 128) sts]

Rounds 1 - 10: * K2, P2 * rep ** to the end.

Change to needles 4.5 mm

Round 11: K all sts

Round 12: K and increase evenly 40 sts (= m1). [152 (152, 160, 168) sts]

Round 13: K all sts

Rounds 14 - 24: follow **CHART A** from right to left

Round 25: K all sts with **C1**

Round 26: with **C1** * K4, m1 * rep** to the end [190 (190, 200, 210) sts]

Round 27: K all sts with **C1**

Rounds 28 - 32: follow **CHART B** from right to left

Round 33: K all sts with **C1**

Round 34: K and increase evenly 42 (50, 48, 46) sts (= m1) [232 (240, 248, 256) sts]

Round 35: K all sts with **C1**

Rounds 36 - 46: follow **CHART C** from right to left

Round 47: K all sts with **C1**

Round 48: K and increase evenly 58 (60, 62, 64) sts (= m1) [290 (300, 310, 320) sts]

Round 49: K all sts with **C1**

Rounds 50 - 54: follow **CHART B** from right to left

Round 55: K all sts with **C1**

Round 56: K and increase evenly 14 (20, 26, 32) sts (= m1)[304 (320, 336, 352) sts]

Round 57: K all sts with **C1**

Rounds 58 - 71: follow **CHART D** from right to left

Round 72 : K and increase evenly 1 (10, 14, 23) sts (= m1) [305 (330, 350, 375) sts]

Rounds 73 - 77 : follow **CHART E** from right to left

Only for sizes L and XL: K 5 and 7 rounds with MC

Place the sts for each sleeve onto holder or scrap yarn:

Place the first 56 (60, 62, 64) sts onto holder or scrap yarn (first sleeve), cast on 4 (5, 8, 10) underarm sts, K 97 (105, 113, 124) (front), place 56 (60, 62, 64) sts onto holder or scrap yarn (second sleeve), cast on 4 (5, 8, 10) underarm sts , K 96 (105, 113, 123) (back).

Body sts: 201 (220, 242, 267)

Body

Work with **MC** in **stocking st** until sweater measures about 28 (28, 29, 30) cm from underarm.

Decrease round: K and decrease evenly 13 (20, 22, 23) sts. (K2tog) [188 (200, 220, 244) sts]

Hem

Change to needles 3.5 mm

Work 14 rounds 2/2 rib st: * K2, P2 * rep ** to the end.

Cast off all sts

SLEEVES

Slip the 56 (60, 62, 64) held **stitches** from holder to **4.5 mm needles**.

With **MC** pick up and knit 4 (6, 8, 10) underarm sts. Place the **SM** in the center of the underarm sts and start working in the round.

Stitches: 60 (66, 70, 74).

Work in **stocking st** until sleeve measures about 36 (36, 37, 38) cm from underarm.

Decrease round: K and decrease evenly 20 (22, 22, 22) sts (K2tog) [40 (44, 48, 52) sts]

Cuff

Change to needles 3.5 mm

Work 12 rounds 2/2 rib st: * K2, P2 * rep ** to the end.

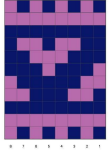
Cast off all sts

Weave in all ends. Wash and block garment carefully.

PHOTOGALLERY



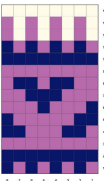
SCHEMA A



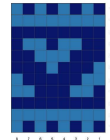
SCHEMA B



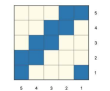
SCHEMA D



SCHEMA C



SCHEMA E



LEGENDA



CHART A

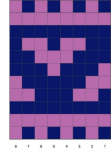


CHART C

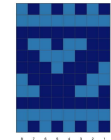


CHART E

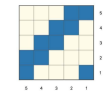
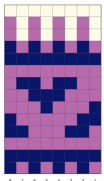


CHART B



CHART D



KEY

