

SHAWL TRINITY

DIFFICULTY =

Yarn: [Matera](#) by Laines du Nord (100% merinos wool - 50 gr, 160 mt):

Photo: 4 yarns balls in blue (cod. 15) (color A), 3 yarns balls in green (cod. 10) (color B), 3 yarns balls in pink (cod. 13) (color C);

Circular needles 4.50 mm and cables 80 e 100 mm;

Marker



LEVEL: Expert

This shawl has a particular construction made up of 3 different sections. These sections are knitted by picking up the stitches on one side of the previous working. This type of construction allows to create a shawl with a particular arrowhead shape.

To simplify the construction of the shawl, we will name the various sections as illustrated in figure 1:

Section A: is the first section knitted.

Section B: is the second section knitted. You start by picking up the stitches along the short side of section A.

Section C: shawl border. The stitches are picked up along the outer side of the whole shawl.

SAMPLE

POINTS USED

ABBREVIATIONS

sts: stitches;

P: purl;

K: knit;

dec: decreasing

P2Tog: purl 2 sts together;

yo: yarn over.

MEASURES

PROCEDURE

SECTION A (color A)

With needles 4,50 and yarn color A, cast on 76 stitches, place markers after 3 stitches, and after every 7 stitches, end finish with 3 stitches.

SPECIAL NOTES: the first and lasts 3 stitches are edge stitches, that are not included in chart, and is ALWAYS knitted as follow:

first 3 stitches: slip 1 pwise, k2

last 3 stitches: k3

Knitting now CHART 1, and repeating section marched bold - SEZ. A, from row 1 to row 40 for total 7 times.

Knitting from row 1 to row 23 one more time.

Now continue with decreasing sections.

DECREASING SECTIONS

SPECIAL NOTES: in decreasing pattern, every repeating section involving the decrease is knitted in stockinette.

Decreasing is placed on wrong side: Knit edge, decrease (P2Tog), knit in stockinette remaining sts of first repeating section. Other stitches is knitted in pattern

Now repete decreasing section for other stitches until 7 sts remain (3 3 edge 1).

Now decreasing in the middle until 3 sts remain

Loosely Bind off

SECTION B (color B)

On right side, with needles 4,50 mm and yarn color B, pick up purling 76 sts on short edge as in the figure 1.

SPECIAL NOTES: the first and last 3 stitches are edge stitches, are not included in chart, and is ALWAYS knitted as follow:

firs stitch: slip 1 pwise

last 3 stitches: k3

Knitting now CHART 1 - SEC B , rows 1a and 2a.

Now knitting from row 1 to row 27, total 5 times.

Continue with CHART 2 - SEC B, and repeating section marked bold with decreasing until 26 sts remain. Other stitches are knitted in patt.

Now knitting FINAL SHAWL POINT CHART.

Loosely Bind off

SECTION C (color C)

On right side, with needles 4,50 mm and yarn in color C, pick up knitting along edges of shawl:

Along the edge of long side of section B, plus cast on of section A, pick up 215 sts. Then pick up a stitch on the corner (this is central stitch, in this point we will knit the increases), continue to pick up 178 sts on the other section (section A).

Now continue purling 1 row.

Now continue to knit SECTION C in this order:

CHART 1 - SEC. C

CHART 2 - SEC. C

CHART 3 - SEC. C

exemple: row 1 of chart 1, 2 and 3; then row 2 of chart 1, 2 and 3 etc.

Repeat one more time all CHARTS of section c, from row 1 to row 13, but in this last row (13)

we have to make only the increase yarn over the one after e before the 3 edge stitches and the one after and before the middle stitch.

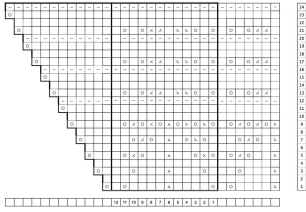
Loosely Bind off

Weave in ends.

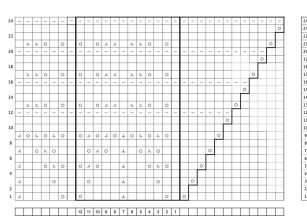
Wash and dry flat.

PHOTOGALLERY

SEZIONE SECTION C - SCHEMA/CHART 3



SEZIONE SECTION C - SCHEMA - CHART 1



SEZIONE SECTION C - SCHEMA/CHART 2

