

# ARAN SCHOOL JACKET

**DIFFICULTY** =

**YARN** = [Aran Tweed](#) by Laines du Nord 50/90 m Color cod 2: 9 (10, 11) balls

**NEEDLES** = 5 mm

**OTHER** = stitch markers, tapestry needle, 7 buttons.



Read Charts for bottom up; on RS (odd numbers) read from right to left, on WS (even number) from left to right.

This project is worked back and forth from the top down with raglan sleeves. Use 2 different colors for the 2 types of stitch markers to avoid getting confused.

## SAMPLE

18 stitches and 25 rows = 10 X10 cm in stocking st. with needles **5 mm**. Adjust the needles size if it's needed to achieve the correct gauge.

## POINTS USED

**2/2 rib st.:** **Row 1:** \* K2, P2\* rep \*\* to the end. **Row 2:** work sts as they appear.

## ABBREVIATIONS

**RS** = right side;

**WS** = wrong side;

**K** = knit;

**P** = purl;

**st(s)** = stitch(es);

**SM** = stitch marker;

**SMc** = stitch marker that mark the chart;

**sSM** = slip SM;

**K2tog** = knit 2 sts together;

**SKP** = slip 1, K1, pass slipped st. over.

**m1** = make one by picking up one a loop between two stitches and knitting into the back of the new stitch.

**2/2 rc: (left cable)** = Slip 2 stitches on cable needle, hold in back, K2, K2 from cable needle.

**2/2 lc: (left cable)** = Slip 2 stitches on cable needle, hold in front, K2, K2 from cable needle.

**1/1 lc: (left cable)** = Slip 1 stitches on cable needle, hold in front, K1, K1 from cable needle.

**rep \*\***= repeat from \* to \*

## MEASURES

### SIZES S (M, L)

#### MEASURES OF THE FINISHED GARMENT:

Size in photos M

Bust circumference 108 cm

Total length: 53 cm

Length from underarm to hem: 33 cm

Sleeve length: 47 cm

xUpper sleeve circumference: 32 cm

## PROCEDURE

With **needles 5 mm** cast on **88 (98, 108) sts**. Work back and forth.

Work 2 rows in stocking st.

**Place SM as follows:**

**Row 3 (RS):** K14(16, 18) (front), place **SM**, K4, place **SM**, K4(6, 8) (sleeve), place **SM**, K4, place **SM**, K11(12, 13), place **SMc**, K14, place **SMc**, K 11 (12, 13), [back], place **SM**, K4, place **SM**, K4(6, 8) (sleeve), place **SM**, K4, place **SM**, K14 (16, 18) (front).

**Row 4 (WS):** P to **SM**, sSM, **K1, P2, K1**, sSM, P to **SM**, sSM, **K1, P2, K1**, sSM, P to **SMc**, K2, P4, K2, P4, K2, slip SMc, P to **SM**, pMP, **K1, P2, K1**, sSM, P to **SM**, sSM, **K1, P2, K1**, sSM, P to the end.

**Start the increases for sleeves, back and fronts as follows:**

**Row 5 (RS):** K to **SM**, m1, sSM, **CHART A**, sSM, m1, K to **SM**, m1, sSM, **CHART A**, sSM, m1, K to SMc, **CHART B**, K to **SM**, m1, sSM, **CHART A**, sSM, m1, K to **SM**, m1, sSM, **CHART A**, sSM, m1, K to the end.

**(8 sts increased)**

**Row 6 (WS):** P to **SM**, sSM, **CHART A**, sSM, P to **SM**, sSM, **CHART A**, sSM, P to SMc, **CHART B**, P to **SM**, sSM, **CHART A**, sSM, P to **SM**, sSM, **CHART A**, sSM, P to the end.

**Repeat Rows 5 and 6 another 22 (23, 24 ) times**

[sts on needles: 272 (290, 308) ]

**Now place the sts for each sleeve onto holder or scrap yarn as follows:**

**RS:** K to **SM**, remove SM, K4, place the next 50 (54, 58) onto holder or scrap yarn (sleeve), cast on 4 (6, 8) **sts** for underarm, remove SM, K4, remove SM, **K to SM**, remove SM, K4, remove SM, place the next 50 (54, 58) onto holder or scrap yarn (sleeve), cast on 4 (6, 8) **sts** for underarm, remove SM, K4, remove SM, **K to the end**

**WS:** P to SMc, **CHART B**, P to the end.

**Work the body of the cardigan**

Body sts: 180 (194, 208)

Work **20 rows** in **stocking st.** as follows:

**RS rows:** K to SMc, **SCHEMA B**, K to the end.

**WS rows:** P to SMc, **SCHEMA B**, P to the end.

**Start working CHARTS at sides as follows:**

**RS rows:** K4, **CHART C** (8 sts), K to SMc, **CHART B**, K to 12 sts before end, **CHART D** (8 sts), K4.

**WS rows:** P4, **CHART D** (8 sts), P to SMC, **CHART B**, P to 12 sts before end, **CHART C** (8 sts), P4.

Continue working this way for the next 28 cm.

## Hem

**Rows 1 - 16:** work in **2/2 rib st.** as follows:

**RS:** \* K2, P2 \* rep \*\* to the end

**WS:** work sts as they appear.

Cast off all sts.

## SLEEVE (X2)

**Work in rounds.**

Slip the **50 (54, 58)** held stitches from holder to **5 mm** circular needles (using the short cable or DPNs if you prefer); pick up and knit **4 (6, 8)** underarm sts.

Place **SM** in the center of the underarm sts and work in the round. 54 (60, 66) sts.

**Round 1:** K

**Round 2:** K2tog, K to the end. 53 (59, 65) sts.

Knit **4 rounds**

**Decrease round:** K1, K2tog, K to 2 sts before end, SKP. 51 (57, 63) sts.

Knit **5 rounds**

**Decrease round:** K1, K2tog, K to 2 sts before end, SKP. 49 (55, 61) sts.

Knit **16 rounds**

**Decrease round:** K1, K2tog, K to 2 sts before end, SKP. 47 (53, 59) sts.

Work in stocking st (K all rounds) until sleeve measures about 30 from underarm.

**Next round:** K and decrease evenly 7 (9, 11) sts (K2tog). 40 (44, 48) sts

## Cuff

**Rounds 1 - 14:** work in **2/2 rib st.** \*K2, P2 \* rep \*\* to the end

Cast off all sts.

### **Make the second sleeve.**

#### **CENTRAL EDGES**

##### **Left side**

With **5 mm needles** pick up and knit 100 (102, 104) sts along the left central edge.

Work **10 rows** in **2/2 rib st** as follows:

**Row 1: \*K2, P2 \*** rep \*\* to the end.

**Row 2:** work sts as they appear

Cast off all sts,

##### **Right side**

With **5 mm needles** pick up and knit 100 (102, 104) sts along the right central edge.

Work **10 rows** in **2/2 rib st** and on **Row 3** work 7 buttonholes evenly.

Cast off all sts,

#### **NECK**

With **5 mm needles** pick up and knit **100 (110, 120)** sts along the neck.

Work **18 rows** in **2/2 rib st** as follows:

**Row 1: \*K2, P2 \*** rep \*\* to the end.

**Row 2:** work sts as they appear

Cast off all sts,

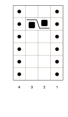
Sew the buttons in correspondence of the buttonholes.

Weave in all ends, wash and block garment carefully.

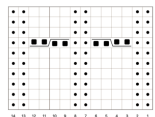
#### **PHOTOGALLERY**



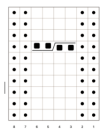
SCHEMA A



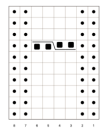
SCHEMA B



SCHEMA C



SCHEMA D



LEGENDA



CHART A



CHART B

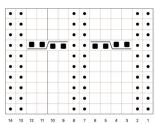


CHART C

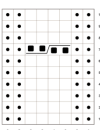
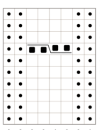


CHART D



KEY

