

BULKY PULLOVER

DIFFICULTY =

YARN: [Firenze](#) by Laines du Nord 50 gr/ 160 m balls.

Main color: 4, 5 (5, 6) balls (CP = green, cod: 404)

Color 1: 1, 2 (2, 2) balls (C1; cod: 405)

Color 2: 1, 2 (2, 2) balls (C2; cod: 406)

Color 3: 1 (1, 1, 1) balls (C3; cod: 407)

CIRCULAR NEEDLES = **8** and **9 mm** (cables 100 cm and 60 cm for sleeves)

OTHER = stitch markers, tapestry needle.



WORK chart in stocking st. (K all rounds).

Read the CHARTS from the bottom-up and from right to left.

This sweater is worked in the round from the top down, with circular yoke.

SAMPLE

14stitches and 19 rows = 10 X10 cm in stocking st. with needles **9 mm**. Adjust the needles size if it's needed to achieve the correct gauge.

POINTS USED

Stocking stitch;

1/1 rib st: All rounds: *K1, P1 * rep ** to the end.

ABBREVIATIONS

st(s): stitch(es);

SM: stitch marker;

SMB: stitch marker of the beginning of the round;

sSM: slip SM;

K: knit;

P: purl;

K2tog: knit 2 sts together;

SKP: slip 1, K1, pass slipped stitch over;

m1: make one by picking up one a loop between two stitches and knitting into the back of the new stitch.

MC: main color;

C1: color 1;

C2: color 2;

C3: color 3.

rep **: repeat from * to *

MEASURES

SIZES - XS, S (M, L)

MEASURES OF THE FINISHED GARMENT:

Size in photos: M

Bust circumference: 100 cm

Total length: 56 cm

Length from underarm to hem: 32 cm

Sleeve circumference: 32 cm

Sleeve length from underarm: 38 cm

PROCEDURE

YOKE

Sizes XS, S (M, L)

With **needles 8 mm** and **C1** cast on 56, 56 (60, 64) insert the marker to mark beginning of row, **SMB**, and start to work in the round ensuring that the work is not twisted.

Rounds 1 - 7: * K1, P1 * rep** to the end.

Round 8: K all sts

Change to needles 9 mm

Rounds 9- 10: K all sts

Round 12: K and increase evenly 16, 20 (20, 20) sts (= m1). [72, 76 (80, 84) sts]

Rounds 12- 13: K all sts

Follow CHART A

216, 228 (240, 252) sta on needles after Chart A.

Only for size L:

Knit 2 rounds.

Increase round: K and increase evenly 8 sts. (260 sts)

All sizes.

Place the sts for each sleeve onto holder or scrap yarn:

With MC.

Place the first 44, 44 (44, 46) sts onto holder or scrap yarn (first sleeve), cast on 2, 2 (2, 4) underarm sts, K 64, 70 (76, 80)(front), place 44, 44 (44, 46) sts onto holder or scrap yarn (second sleeve), cast on 2, 2 (2, 4) underarm sts , K 64, 70 (76, 80)(back).

Body sts: 132, 144 (156, 168)

Body

With MC knit 3 rounds.

Follow CHART B

Work in sotkcing st. (=K all rounds) until the sweater measures about 33 cm from underarm.

Hem

Cagne to needles 8 mm

Work 14 rounds in 1/1 rib st: * K1, P1 * rep** to the end.

Cast off all sts.

SLEEVES

Slip the 44, 44 (44, 46)held **stitches** from holder to **9 mm needles**.

With **MC** pick up and knit 2, 2 (2, 4)underarm sts.Place the **SM** in the center of the underarm sts and start working in the round.

Stitches:46, 46 (46, 50).

Knit 20 rounds

Decrease rounds: K2tog, K to 3 sts before end, SKP, K1.

Knit 12 rounds

Decrease rounds: K2tog, K to 3 sts before end, SKP, K1.

Knit 10 rounds

Decrease rounds: K2tog, K to 3 sts before end, SKP, K1.

Knit 10 rounds

Decrease rounds: K2tog, K to 3 sts before end, SKP, K1.

Knit 6 rounds

Sta on needles 38, 38 (38, 42)

Only for sizes XS and S

Decrease rounds: K2tog, K to 3 sta before end, SKP, K1. (36, 36 sts)

Cuff

Change to needles 8 mm

Work 8 rounds in 1/1 rib st: * K1, P1 * rep ** to the end.

Cast off all sts.

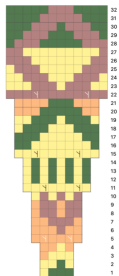
Make the second sleeve.

Weave in all ends. Wash and block garment carefully.

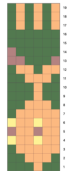
PHOTOGALLERY



SCHEMA A



SCHEMA B



LEGENDA



CHART A



CHART B



KEY

