

LEITMOTIVE PULLOVER

DIFFICULTY =

YARN: [Alpaca Brushed](#)

MC: 4 (5, 6) balls, (White cod. 1)

C1: 1 ball, (Ocher cod. 2)

C2: 1 ball, (Brown cod. 22)

C3: 1 ball, (Red cod. 25)

C4: 1 ball, (Violet cod. 69)

NEEDLES = 5 and 6.5 mm

OTHER = stitch markers, tapestry needle.



CHART is worked in stocking st. (= knit all rounds). Read CHART from bottom up and from right to left. This project is worked in the round from the top down with raglan sleeves.

SAMPLE

13 stitches and rows = 10 X10 cm in stocking st. with needles **6.5 mm**. Adjust the needles size if it's needed to achieve the correct gauge.

POINTS USED

2/2 rib st.: All Rounds: * K2, P2* rep ** to the end

ABBREVIATIONS

K: knit

P: purl

st(s): stitch(es)

SM: stitch marker

sSM: slip SM

K2tog: knit 2 sts together

m1: make one by picking up one a loop between two stitches and knitting into the back of the new stitch.

MC: main color; **C1** = color 1; **C2** = color 2; **C3** = color 3; **C4** = color 4

rep **: repeat from * to *

MEASURES

SIZES S (M, L)

MEASURES OF THE FINISHED GARMENT

Size in photos M

Bust circumference: 101 cm

Total length: 57 cm

Length from underarm to hem: 37 cm

Sleeve length: 46 cm

Upper sleeve circumference: 34 cm

PROCEDURE

With **needles 5 mm** and MC cast on **72 (80, 88) sts**, place **SM** and join in the round.

Rounds 1 - 9: work in **2/2 rib st.** as follows:

* **K2, P2** * rep ** to the end

Round 10: knit all stitches

Switch to needles 6.5 mm

Round 11: knit all stitches

Round 12 place **SMs for increases** as follows:

K1, place **SM**, K 4 (6, 8) (first sleeve), place **SM**, K1, place **SM**, K 30 (32, 34) (front), place **SM**, K1, place **SM**, K 4 (6, 8) (second sleeve), place **SM**, K1, place **SM**, K 30 (32, 34) (back), end of the round.

Now start increases for the sleeves, back and front. Work as follows:

Round 13: K1, sSM, **m1**, K to SM, **m1**, sSM, K1, sSM, **m1**, K to SM, **m1**, sSM, K1, sSM, **m1**, K to SM, **m1**, sSM, K1, sSM, **m1**, K to SM, **m1**. (= 8 sts increased)

Round 14: knit all stitches

Repeat rows 13 and 14 another 13, (14, 16) times

Stitches on needles 184 (200, 224)

Now place the sts for each sleeve onto holder or scrap yarn as follows:

Place the first **34 (38, 42) sts** onto holder or scrap yarn (first sleeve), cast on **2 (4, 6) sts** for underarm, **K 58 (62, 66)**, place the next **34 (38, 42) sts** onto holder or scrap yarn (second sleeve), cast on **2 (4, 6) sts** for underarm, **K58 (62, 66)**.

Remove all SMs and place the SM of the beginning of the round at the underarm.

Work the body of the sweater.

Body sts: 120 (132, 144)

Knit 1 round.

Follow **CHART**

Whit MC work in stocking st (= knit all rounds) until sweater measures about 33 cm from underarm

Switch to needles 5 mm

Hem

Rounds 1 - 9: work in **2/2 rib st.** as follows:

* **K2, P2** * rep ** to the end

Cast off all stitches

SLEEVES (X2) All sizes S (M, L):

Slip the **34 (38, 42)** held stitches from holder to **6.5 mm** needles (using the short cable or DPNs if you prefer); pick up and knit **2 (4, 6)** underarm sts.

Place **SM** in the center of the underarm sts and work in the round.

Stitches on needles: 36 (42, 48)

Knit 2 rounds with MC

Follows **CHART**

Knit 37 rounds with MC

Decrease rounds: Knit and decrease evenly 4 (6, 8) sts (K2tog [32 (36, 40) sts]

Switch to needles 5

Cuff

Rounds 1 - 6: work in **2/2 rib st.** as follows:

* **K2, P2** * rep ** to the end

Cast off all stitches.

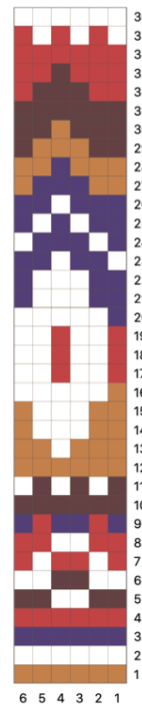
Make the second sleeve.

Weave in all ends, wash and block garment carefully.

PHOTOGALLERY

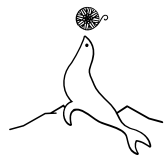


SCHEMA



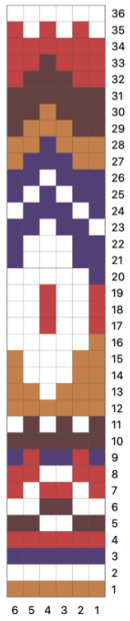
LEGENDA

- CP
- C1
- C2
- C3
- C4



LAINES
du NORD®

CHART



KEY

-  MC
-  C1
-  C2
-  C3
-  C4