

DIFFICULTY =

YARN = [VASTO](#) by LAINES DU NORD; 2 balls of no. 9 black; 1 ball of each colour: no. 1 white, no. 5 sand, no. 6 yellow ochre

CROCHET-HOOK = size 5

OTHER = darning needle, sewing needle and black thread, scissors, pins, tap measure; one couple of bamboo handles c/w gold rings (16 cm in width); 2 gold D-shaped rings; 1 gold magnetic clasp; 1 gold metal chain with snap-hooks at the ends (80 cm in length); fun foam; black lining; 6 small squares of black fabric (4 x 4 cm) for loops shaping.



SKILL LEVEL: Intermediate

Front and back consist of two equal panels. Each panel consists of one central square granny motif and 2 side granny sections worked on both sides of square motif. The band "œbag-band" consists of 2 small square motifs and one granny section (between the 2 motifs).

SAMPLE

POINTS USED

Chain stitch, single crochet, double crochet, treble crochet.

ABBREVIATIONS

RS = right side of work

WS = wrong side of work

NB = please note

st./sts. = stitch/stitches

col. = colour

ch = chain stitch

sc = single crochet

dc = double crochet

tr = treble crochet

rep. = repeat

fol. = follow/following

beg. = begin / beginning

MEASURES

Square motif A: 28 x 28 cm

Panel: 48 in width x 30 cm in height

Measure of finished bag: 48 cm width x 30 cm height x 16 cm deep

PROCEDURE

PANEL (x 2)

Square central granny A

Using no. 5 crochet-hook and yellow ochre yarn, shape a magic ring.

1st round: 3 ch (instead of 1st tr, also in next rounds), 2 tr inside the ring, 3 ch, (3

tr inside the ring, 3 ch) 3 times; pull the yarn tightening the ring and close with

1 sc in 3rd beg. ch. Cut the yarn and close. Continue foll. the diagram 1 until the end of 11th round, alternating the colours as foll.: 1st round yellow ochre, 2nd round white, 3rd round black, 4th and 5th round sand, 6th and 7th round yellow ochre, 8th and 9th round white, 10th and 11th round black. Cut the yarn and close.

Side section B

On RS, join the sand yarn like shown by point B of the diagram 1 and work 8 rows (in back and forth) on base sts. of one side of square motif A, alternating the colours as foll.: 1st and 2nd row sand, 3rd and 4th row yellow ochre, 5th and 6th row white, 7th and 8th row black. Cut the yarn and close.

Side section C

On RS, join the sand yarn in point C like shown by the 1 and work 8 rows on side opposite the square motif A, alternating the colours like shown by the section B.

Give the finishing touch to the panel

Join the black yarn to one of 4 corners of the panel (RS), 1 ch (do not count it like 1st st.), * 3 dc in corner-space, 1 dc in each tr of next side, skipping 1-ch-spaces *, rep from * to * 3 times more; 1 sc in 1st dc of the round. Cut the yarn and close.

Hide the ends inside the fabric.

Work the second panel like given for first one

BAND – BAG-BAND – (SIDES AND BASE)

Small square motif D (x 2)

Using the yellow ochre yarn, work 2 motifs foll. the diagram 2, alternating the colours as foll.: 1st round yellow ochre, 2nd round white, 3rd round black, 4th round sand, 5th round yellow ochre. At last, Cut the yarn and close.

Work the second square D, like the first one.

Granny E Section

Join the white yarn to point E of diagram 2 and work along one side of first square motif D like shown by the diagram, rep. (2 rows with white, 2 rows with black, 2 rows with sand and 2 rows with yellow ochre) until the end of the 66th row.

NB: before closing, check the length of the band; it must fit to turn around the side edges and lower edge of the panels (consider that will be added the second square motif D). If necessary, add or remove one row of section E.

Cut the yarn and close, leaving a long tail for sewing.

Give the finishing touch to the band, sewing the last row granny section E and one side of second square motif D, on WS.

Give the finishing touch to the band

Using the black yarn, work one round in dc around the perimeter of the band, working 3 dc in each corner-space. Cut the yarn and close.

Hide the ends inside the fabric.

FINISHING

Cut 2 rectangles of lining having same measures of the 2 panels, adding 2 cm, on each side, for sewing them.

Cut 2 stripes of fun-foam: 28 cm in width x 5 cm in height.

Using a pencil or a [chalk](#), on each stripe, draw 2 diagonal lines (from one corner to the other one), to find the central point where you must insert the magnetic clasp for both panels.

Cut on 2 flaps of each of 2 pieces of magnetic clasp: on fun-foam and then on lining.

Place each fun-foam stripes (2 stripes) in the centre of top part of each panel (WS); make a small hem around the perimeter of 2 lining rectangles and put them on 2 panels (the fun-foam stays between the 2 layers); fix each of 2 pieces of magnet between the fun-foam and the lining (inside each panel), then pin the layers.

For loops shaping, fold in half and sew each black fabric square shaping a small strip. Insert the loops inside each gold ring of the bamboo handles, fold the loops in half and sew each end inside the top edges of the panels (under the lining edge); place the handles pay attention to the position of the magnetic clasp. Overcast the layers of each panel.

Cut one rectangle of fun-foam having the following measures: long side = panels length, short side = $\hat{a} \hat{e} \hat{o} \hat{b} \hat{a} \hat{g} \hat{b} \hat{a} \hat{n} \hat{d}$ width; cut one stripe of lining having the same measures of the $\hat{a} \hat{e} \hat{o} \hat{b} \hat{a} \hat{g} \hat{b} \hat{a} \hat{n} \hat{d}$ plus 2 cm, on each side, for sewing.

Pass the rem. 2 loops through 2 D-rings, fold them in half and sew the ends in the centre of 2 short sides of the stripe, on WS.

Place the fun-foam in the centre of the band (on WS) to cover the base and make a small hem on each side of the lining stripe, then fix it on WS of the band $\hat{a} \hat{e} \hat{o} \hat{b} \hat{a} \hat{g} \hat{b} \hat{a} \hat{n} \hat{d}$ covering the fun-foam and the loops of D-rings; at last, sew the layers in their position.

Join the snap-hooks of the chain with 2 D- rings.

Join the 2 long sides of the $\hat{a} \hat{e} \hat{o} \hat{b} \hat{a} \hat{g} \hat{b} \hat{a} \hat{n} \hat{d}$ with the side edges and the lower edge of the 2 panels. Using the black yarn, on each side, work one row in dc.

PHOTOGALLERY



Schema 1: davanti - dietro della borsa

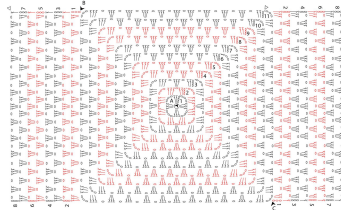
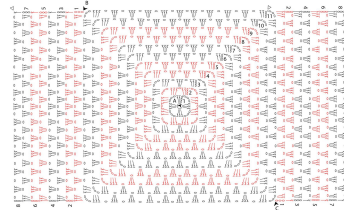


Diagram 1: front - back of the bag



Schema 2: laterali e fondo

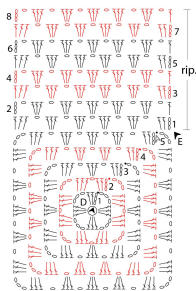
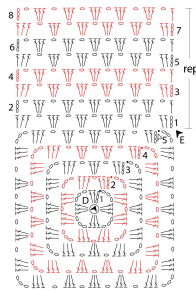


Diagram 2: sides and base



Legenda

- ▲ inizio
- △ fine
- catenella
- m. bassissima
- × m. bassa
- ↑ m. alta

Key

- ▲ beginning
- △ end
- chain stitch
- single crochet
- × double crochet
- ↑ treble crochet