

BEDFORD COAT

DIFFICULTY =

YARN = [TWIST](#) by LAINES DU NORD; 7 balls x 100 grams of col. 3 (beige); 2 balls x 100 grams of following colours: 142 (ochre), 94 (purple), (415) green

CROCHET-HOOK = size 6

OTHER = darning needle, scissors, pins, tape measure, marker, 3 wooden buttons (3 cm in diameter)



SKILL LEVEL: Intermediate

SAMPLE

POINTS USED

Chain stitch, single crochet, double crochet, treble crochet

Back post double crochet: insert the hook in the back thread of the base st. and work one double crochet.

Front post double crochet: insert the hook into the space on the right of the column of one treble crochet below, from front to back and to front again, getting out the hook on the left of the same column, yarn over and pull the hook from front to back and to front again, pulling one loop on the right of the same column, yarn over and pull it through 2 loops on crochet-hook.

Puff stitch: (yarn over, insert it into one base stitch, yarn over, pull one loop and extend it up to the same height of a treble crochet) repeat 3 times, inserting the hook into the same stitch, yarn over and pull it through all loops on crochet-hook, close the puff stitch with 1 chain stitch.

ABBREVIATIONS

RS = right side of work
WS = wrong side of work
M = marker
PM = place marker
NB = please note
st./sts. = stitch/stitches
ch = chain stitch
col. = colour/colours
dc = double crochet
sc = single crochet
tr = treble crochet
rep. = repeat/repeating
fol. = follow/following
cont. = continue/continuing

MEASURES

Single size, oversize fit

MEASURES

Coat: 73 cm in height, 57 cm in width

Sleeves: 39 cm in length

PROCEDURE

LEFT FRONT / BACK (diagram 1)

Using beige col., cast-on 166 ch.

1st row (RS): 1 tr in 5th ch from hook and in each ch until the end, turn. [163 tr included 3-beg-ch]

2nd row (WS): 1 ch (never count it like 1st st.), 1 FPdc around each st. of the row. Cut the

yarn, close and turn. [163 FPdc]

3rd row (RS): join the green yarn into the 1st dc of the row on RS, 3 ch (instead of 1st tr, for the next rows too), 1 tr in the next st., (skip 1 base st., 1 tr in each of 2 next st., 1 puff st. in the skipped st., passing in front of 2 just worked tr) 53 times, 1 tr in each of 2 last sts., turn.

4th row (WS): 1 ch, 1 FPdc around each tr and each puff st. of the row. Cut the yarn, close and turn.

The first 4 rows shape the patterned stitch.

From 5th to 12th row: rep. from 1st to 4th row twice, considering that, across 1st row, you must work the sts. into the dc instead of into the ch. While working, alternate the colours as foll.: 5th and 6th row with beige, 7th and 8th row with ochre, 9th and 10th row with beige, 11th and 12th row with purple. At the end of 12th row, Cut the yarn, close and turn.

13rd row: using beige yarn, rep. the 1st row.

Work 2 pieces separately, finishing the front and cont. the back.

14th row: 1 ch, 1 FPdc in each of 72 next sts. Cut the yarn, close and turn, leaving the remaining sts. (neckline and back). [72 FPdc]

From 15th row to 22nd row: cont. in patterned st., only on 72 dc of left front and, for neckline shaping, work like shown by the diagram 1. Across the working, alternate the col. as foll.: 15th and 16th row with green, 17th and 18th row with beige, 19th and 20th row with ochre, 21st and 22nd row with beige. Cut the yarn and close. Hide the ends inside the fabric.

BACK (diagram 1)

14th row (WS): skip the 9 sts. you haven't work after the first 72 sts. of left front and, into the next st. (point B), work 1 sc joining the beige yarn, 1 ch (never count it like 1st st.), 1 FPdc around same base st. of the ch and around each of 77 next sts. Cut the yarn, close and turn. [78 FPdc]

From 15th to 25th row: cont. in patterned st. only on 78 sts. of the back, like shown by the diagram 1, alternating the colours as foll.: 15th and 16th row with green, 17th and 18th row with beige, 19th and 20th row with ochre, 21st and 22nd row with beige, 23rd and 24th row with green, 25th row with beige. At the end of 78th st. of the 25th row, cut the yarn and close. Hide the ends inside the fabric.

RIGHT FRONT / BACK (diagram 2)

Using beige yarn, cast-on 81 ch and work 1 sc in 1st dc of the 24a row of back.

NB: the 25th row of the back is the same in diagram 1 and diagram 2, for this reason it has been highlighted in green col.

25th row: 3 ch (instead of 1st tr of each r.), 1 sc in the last tr of 25th row of the back, joining the 2 pieces of the cardigan (diagram 2), turn and work 1 tr in each of 8 next ch. (neckline), then 1 tr in each of 72 tr of the right front, turn.

26th row: 1 ch (never count it like 1st st.), 1 FPdc around the same base st. of the ch and around each st. of right front and back, until the end. Cut the yarn, close and turn.

From 27th to 37th row: cont. in patterned st., alternating the col. as foll.: 27th and 28th row with purple, 29th and 30th row with beige, 31st and 32nd row with ochre, 33rd and 34th row with beige, 35th and 36th row with green, 37th row with beige. Cut the yarn and close. Hide the ends inside the fabric.

Front piece of right front (diagram 2)

Turn the panel upside down and start to work on base ch of the right front.

1st row (WS): on WS, join the beige yarn at 72nd base ch of right front (point D of diagram 2) and work 1 ch, 1 FPdc in the same base tr of the ch and around each of 71 next tr in the 25th row of right front (like shown by the diagram 2). Cut the yarn, close and turn.

From 2nd to 9th row: work in patterned st. foll. the diagram 2 and, for neckline shaping, decrease like shown and alternating the col. as foll.: 2nd and 3rd row with green, 4th and 5th row with beige, 6th and 7th row with ochre, 8th and 9th row with beige. Cut the yarn and close. Hide the ends inside the fabric.

SLEEVE (x 2)

On WS, PM at 1st and 52nd st. of 52 central tr of 37th row of right front/back.

1st row (WS): join the beige yarn at 1st st. with the M and, inside it, work 1 ch (never count it like 1st tr), 1 FPdc around the same st. of the ch and around each of 52 next sts. (remove the 2 M). Cut the yarn, close and turn.

2nd row (RS): using purple yarn, work like 3rd row of the patterned st. (see right front/back)

3rd row (WS): work like 4th row of the patterned st. Cut the yarn, close and turn.

From 4th to 25th row: cont. in patterned st., alternating the col. as foll.: 4th and 5th row

with beige, 6th and 7th row with ochre, 8th and 9th row with beige, 10th and 11th row with green, 12th and 13th row with beige, then rep. like from 2nd to 13th row. Cut the yarn and close.

On WS of the base ch of left front/back, work the second sleeve on 52 central sts., as given for first one.

FINISHING

Fold the panel in half (WS against WS) at the shoulders and centre of the sleeves and, on RS, using beige yarn, work one row in sc joining the sides and undersleeve edges (insert the hook through the sts. of both layers).

Collar

1st row (WS): on WS of neckline and using beige yarn, work 52 front post sts. around the neckline of 2 fronts and back; cut the yarn and turn.

2nd row (RS): work like 1st row of patterned st. (see right front/back), working the tr in the dc instead of in base ch.

3rd row (WS): work like 2nd row of patterned st. Cut the yarn, close and turn.

4th row (RS): joint the green yarn and work like 3rd row of patterned st. turn.

5th row (WS): work like 4th row of patterned st. Cut the yarn, close and turn.

6th row (RS): on RS, join the beige yarn at 1st dc of 1st row of neckline, then cont. upwards along the side of collar, 2 dc at the end of 2nd row, 2 dc at the end of 3rd row, 2 dc at the end of 4th row, turn and work 1 tr in each of 48 central tr of 5th row of collar, turn and cont. downwards on side of collar, 2 dc at the end of 4th row, 2 dc at the end of 3rd row, 2 dc at the end of 2nd row, 1 sc at the end of 1st row, turn.

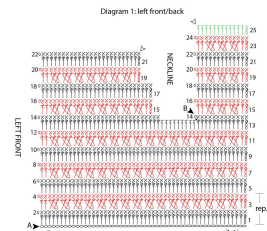
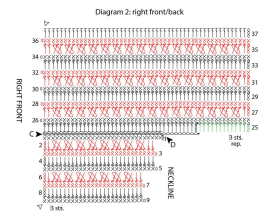
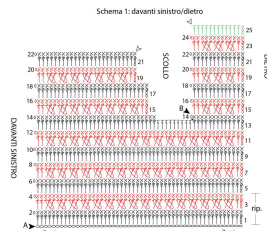
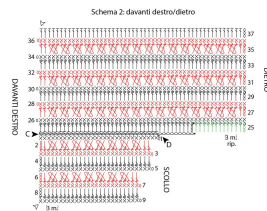
7th row (WS): 1 ch, 1 FPdc in each st. of previous row. Cut the yarn and close. Hide the ends inside the fabric.

On RS, using beige yarn, work 1 round in BPdc along the lower edges, the front edges and the collar edge, then work as given for lower edge of each sleeve.

Sew 3 buttons on front band of left front, placing 1st button just below the collar, 2nd and 3rd button at 12 cm apart. Use the spaces between the sts. of front band of right front like buttonholes.

Hide the ends inside the fabric.

PHOTOGALLERY



Legenda

- ▲ inizio
- △ fine
- catenella
- m. bassissima
- ◁ m. bassa in rilievo davanti
- m. alta
- p. puff

Key

- ▲ begin
- △ end
- chain stitch
- single crochet
- ◁ back post double crochet
- treble crochet
- puff stitch