

PULL NATURAL CHIC

DIFFICULTY =

YARN = [Natura](#) di Laines du Nord

Main Color: 3 (3, 4) balls (CP = cream, cod: 11)

Color 1: 1 (1, 2) balls (C1 = coral, cod: 15)

Color 2: 1 (1, 1) balls (C2 = light yellow, cod: 16)

Color 3: 1 (1, 2) balls (C3 = fuchsia, cod: 24)

CIRCULAR NEEDLES = **3.5** and **4.5 mm** (cables 100 cm and 60 cm for sleeves)

OTHER = stitch markers, tapestry needle.



WORK chart in stocking st. (K all rounds). Read the CHARTS from the bottom-up and from right to left. This sweater is worked in the round from the top down, with circular yoke.

SAMPLE

22stitches and 32 rows = 10 X10 cm in stocking st. with needles **4.5 mm**. Adjust the needles size if it's needed to achieve the correct gauge.

POINTS USED

Stocking stitch;

2/2 rib st: All rounds: *K2, P2 * rep ** to the end.

ABBREVIATIONS

st(s) = stitch(es);

SM = stitch marker;

SMb = stitch marker of the beginning of the round;

sSM = slip SM;

K = knit;

P = purl;

K2tog = knit 2 sts together;

SKP = slip 1, K1, pass slipped stitch over;

SK2P = slip 1, K2tog, pass slipped stitch over;

m1 = make one by picking up one a loop between two stitches and knitting into the back of the new stitch.

MC = main color

C1 = color 1

C2 = color 2

C3 = color 3

rep ** = repeat from * to *

MEASURES

SIZES - S (M,L)

MEASURES OF THE FINISHED GARMENT:

Size in photos: M

Bust circumference: 100 cm

Total length: 56 cm

Length from underarm to hem: 32 cm

Sleeve circumference: 32 cm

Sleeve length from underarm: 38 cm

PROCEDURE

YOKE

Sizes S (M, L)

With **needles 3.5 mm** and **C1** cast on 116 (120, 124) sts, insert the marker to mark beginning of row, **SMB**, and start to work in the round ensuring that the work is not twisted.

Rounds 1 - 8: * K2, P2 * rep** to the end.

Change to needles 4 mm

Rounds 9 - 11: K all sts

Round 12: K and increase evenly 22 (24, 26) sts (m1). [138 (144, 150) sts]

Round 13: K all sts

Rounds 14 - 21: follow **CHART A** with **C1**

Round 22: K all sts with **C1**

Round 23 : K with C1 and increase evenly 42 (48, 54) sts (m1). [180 (192, 204) sts]

Rounds 24 - 25: K all sts with **C1**

Rounds 26 - 48: follow **CHART B**

Round 49: K all stswith **C1**

Round 50: K with C1 and increase evenly 72 (72, 72) sts (m1). [252 (264, 276) sts]

Round 51: K all stswith **C1**

Rounds 52 - 67: follow **CHART C**

Round 68: K all sts with **C2**

Round 69: K with C2and increase evenly 84 (96, 108) sts (m1) [336 (360, 384) sts]

Round 70: K all sts with **C2**

Rounds 71- 84: follow **CHART D**

Continue with C3

Only for sizes M and L: K 3 and 7 rounds with C3

Place the sts for each sleeve onto holder or scrap yarn:

Place the first 66 (68, 70) sts onto holder or scrap yarn (first sleeve), cast on 2 (4, 6) underarm sts, K 102 (112, 122) (front), place 66 (68, 70) sts onto holder or scrap yarn (second sleeve), cast on 2 (4, 6) underarm sts, K 102 (112, 122) (back).

Body sts: 208 (232, 256)

Body

Knit **8 rounds** with **C3**

Change to MC and work in **stocking st** until sweater measures about 23 (24, 25) cm from underarm.

Hem

Change to needles 3.5 mm

Work 14 rounds 2/2 rib st: * K2, P2 * rep** to the end.

Cast off all sts.

SLEEVE

Slip the 66 (68, 70) held **stitches** from holder to **4.5 mm needles**.

With **C3** pick up and knit 2 (4, 6) underarm sts. Place the **SM** in the center of the underarm sts and start working in the round.

Stitches: 68 (72, 76)

Knit 8 rounds with **C3**

Change to MC.

Work in **stocking st** until sleeve measures about 36 (36, 37) cm from underarm.

Decrease round: K and decrease evenly 24 (24, 26) sts (K2tog) [44 (48, 48) sts]

Change to **C1**

Knit 1 round

Cuff

Change to needles 3.5 mm

Work 16 rounds 2/2 rib st: * K2, P2 * rep** to the end.

Cast off all sts

Weave in all ends. Wash and block garment carefully

PHOTOGALLERY



SCHEMA A



SCHEMA B



SCHEMA C

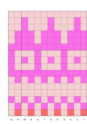


CHART A

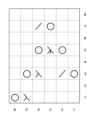


CHART B

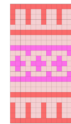
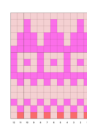


CHART C



SCHEMA D



LEGENDA



CHART D



KEY

