

## PULL NATURAL CHIC

**DIFFICULTY** =

**YARN** = [Natura](#) di Laines du Nord

**Main Color:** 3 (3, 4) balls (CP = cream, cod: 11)

Color 1: 1 (1, 2) balls (C1 = coral, cod: 15)

Color 2: 1 (1, 1) balls (C2 = light yellow, cod: 16)

Color 3: 1 (1, 2) balls (C3 = fuchsia, cod: 24)

**CIRCULAR NEEDLES** = **3.5** and **4.5 mm** (cables 100 cm and 60 cm for sleeves)

**OTHER** = stitch markers, tapestry needle.



WORK chart in stocking st. (K all rounds). Read the CHARTS from the bottom-up and from right to left. This sweater is worked in the round from the top down, with circular yoke.

### POINTS USED

**Stocking stitch;**

**2/2 rib st: All rounds:** \*K2, P2 \* rep \*\* to the end.

### ABBREVIATIONS

**st(s)** = stitch(es);

**SM** = stitch marker;

**SMb** = stitch marker of the beginning of the round;

**sSM** = slip SM;

**K** = knit;

**P** = purl;

**K2tog** = knit 2 sts together;

**SKP** = slip 1, K1, pass slipped stitch over;

**SK2P** = slip 1, K2tog, pass slipped stitch over;

**m1** = make one by picking up one a loop between two stitches and knitting into the back of the new stitch.

**MC** = main color

**C1** = color 1

**C2** = color 2

**C3** = color 3

**rep \*\*** = repeat from \* to \*

## MEASURES

### SIZES - S (M,L)

#### MEASURES OF THE FINISHED GARMENT:

##### Size in photos: M

Bust circumference: 100 cm

Total length: 56 cm

Length from underarm to hem: 32 cm

Sleeve circumference: 32 cm

Sleeve length from underarm: 38 cm

## PROCEDURE

### YOKE

#### Sizes S (M, L)

With **needles 3.5 mm** and **C1** cast on 116 (120, 124) sts, insert the marker to mark beginning of row, **SMb**, and start to work in the round ensuring that the work is not twisted.

**Rounds 1 - 8:** \* K2, P2 \* rep\*\* to the end.

**Change to needles 4 mm**

**Rounds 9 - 11:** K all sts

**Round 12:** K and increase evenly 22 (24, 26) sts (m1). [138 (144, 150) sts]

**Round 13:** K all sts

**Rounds 14 - 21:** follow **CHART A** with **C1**

**Round 22:** K all sts with **C1**

**Round 23 :** K with C1 and increase evenly 42 (48, 54) sts (m1). [180 (192, 204) sts]

**Rounds 24 - 25:** K all sts with **C1**

**Rounds 26 - 48:** follow **CHART B**

**Round 49:** K all stswith **C1**

**Round 50:** K with C1 and increase evenly 72 (72, 72) sts (m1). [ 252 (264, 276) sts]

**Round 51:** K all stswith **C1**

**Rounds 52 - 67:** follow **CHART C**

**Round 68:** K all sts with **C2**

**Round 69:** K with C2 and increase evenly 84 (96, 108) sts (m1) [ 336 ( 360, 384) sts]

**Round 70:** K all sts with **C2**

**Rounds 71- 84:** follow **CHART D**

**Continue with C3**

**Only for sizes M and L:** K 3 and 7 rounds with C3

**Place the sts for each sleeve onto holder or scrap yarn:**

Place the first 66 (68, 70) sts onto holder or scrap yarn (first sleeve), cast on 2 (4, 6) underarm sts, K 102 (112, 122) (front), place 66 (68, 70) sts onto holder or scrap yarn (second sleeve), cast on 2 (4, 6) underarm sts, K 102 (112, 122) (back).

Body sts: 208 (232, 256)

## Body

Knit **8 rounds** with **C3**

Change to MC and work in **stocking st** until sweater measures about 23 ( 24, 25) cm from underarm.

## Hem

**Change to needles 3.5 mm**

**Work 14 rounds 2/2 rib st:** \* K2, P2 \* rep\*\* to the end.

Cast off all sts.

## SLEEVE

Slip the 66 (68, 70) held **stitches** from holder to **4.5 mm needles**.

With **C3** pick up and knit 2 (4, 6 ) underarm sts. Place the **SM** in the center of the underarm sts and start working in the round.

Stitches: 68 (72, 76)

Knit 8 rounds with **C3**

Change to MC.

Work in **stocking st** until sleeve measures about 36 (36, 37) cm from underarm.

**Decrease round:** K and decrease evenly 24 (24, 26) sts (K2tog) [ 44 (48, 48) sts]

Change to **C1**

Knit 1 round

## Cuff

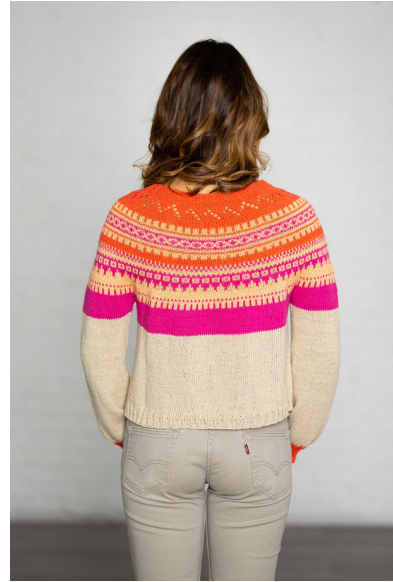
**Change to needles 3.5 mm**

**Work 16 rounds 2/2 rib st:** \* K2, P2 \* rep\*\* to the end.

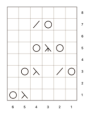
Cast off all sts

Weave in all ends. Wash and block garment carefully

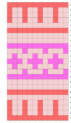
## PHOTOGALLERY



SCHEMA A



SCHEMA B



SCHEMA C

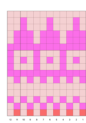


CHART A



CHART B

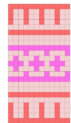
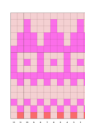


CHART C



SCHEMA D



LEGENDA

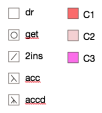
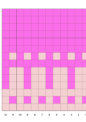


CHART D



KEY

