

GRANNY TOTE BAG

DIFFICULTY =

YARN = [Natural Bag](#) by Laines du Nord: 1 skein of 100 grams for each col.: natural white, bright green, purple, dark blue-green, burgundy

CROCHET-HOOK = size 5

OTHER = darning needle with silicone eye, scissors, pins, marker.



SKILL LEVEL: Easy

The bag consists of 3 big tiles joined in zig-zag stitch. On top of bag, you join (with a decorative seam) one handle made using the crochet-hook.

SAMPLE

POINTS USED

Chain stitch, single crochet, double crochet, treble crochet.

ABBREVIATIONS

RS = right side of work

WS = wrong side of work

st. / sts. = stitch / stitches

ch = chain stitch

col. = colour

sc = single crochet

dc = double crochet

tr = treble crochet

rep. = repeat

fol. = follow / following

MEASURES

PROCEDURE

TILES (x 3)

Using purple yarn, shape a magic ring.

1st round: 3 ch (instead of 1st tr; also in next rounds), 2 tr into the ring, (3 ch, 3 tr into the ring) 3 times; pull the end of the yarn tightening the ring and close working 2 ch and 1 dc in 3rd beg. ch.

2nd round: 3 ch and 2 tr into 1st corner-space, 1 ch, * (3 tr, 3 ch, 3 tr) into next 3-ch-corner-space, 1 ch *, rep. from * to * twice more, 3 tr into the same corner-space of 3 beg. ch; end with 2 ch and 1 dc in 3rd beg. ch. Cut and tie off the yarn.

Cont. following the diagram, alternating the colours as foll.: 3rd and 4th round with bright green, 5th and 6th round with white, 7th round with bright green, 8th round with purple, 9th round with burgundy, 10th round with dark blue-green.

Hide the ends on WS.

FINISHING

Fold each tile in half (picture 1), then join in zigzag st. 2 sides of A and B tiles along 4 sides of C tile, like shown by picture 2 (red lines = sewing lines); A and B tiles shape the sides and C tile shape the base of the bag.

Joining in Zigzag stitch: place on tile on the other one (WS against WS) and, on RS join the white yarn working 1 ch in 1st corner-space of both edges to be joined, then work (1 sc in next st. of 1st tile, 1 sc in next st. of 2nd tile) rep. along the side reaching the next corner-space, 1 dc in corner-space of both tiles.

Finishing touch: after assembling 3 granny tiles, using dark blue-green, work one round in dc along the top edge of 2 tiles that shape the opening of the bag, then work the second finishing round in sc. Cut and tie off the yarn.

Handle

Using dark blue-green yarn, cast-on 23 ch, leaving approx. 15/20 cm tail.

1st row: 1 dc in 2nd ch from hook and in each ch until across the entire row, 1 turning ch (the turning ch isn't 1st st.).

From 2nd to 4th row: 1 dc in each dc of the row, 1 turning ch.

At the end of 4th row, cut and tie off the yarn leaving approx. 15/20 cm tail.

Using the cast-on and bind off tails, sew the ends of the handle on 2 top corners of the bag.

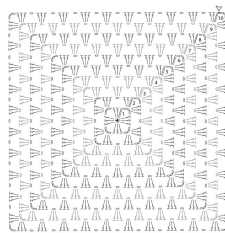
Hide the ends inside the fabric.

If you want, line the bag.

PHOTOGALLERY



Schema 1: motivo granny



Legenda
▲ inizio
△ fine
= catenella
• m. trapuntina
| m. alta

dis. 1: mattonella piegata



Dis. 2: assemblaggio delle 3 mattonelle piegate (le linee rosse evidenziano le cuciture)