

EASY CHIC SWEATER

DIFFICULTY =

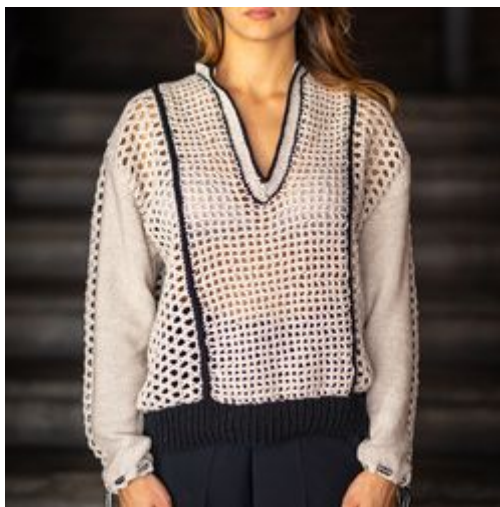
YARN = [Luxury Silk](#) by Laines du Nord; 2 balls of col. 18 (black), 8 balls of col. 2 (rope)

KNITTING NEEDLES = size 5

CIRCULAR NEEDLES = points size 4.5 with 80 cm cable

CROCKET-HOOK = size 3

OTHERS = darning needle, pins, scissors, tape measure.



SKILL LEVEL: Intermediate

This sweater consists of different panels. Work some panels with crochet-hook and some others with knitting needles. After finishing, join them. At last, join the lower band and neckline band.

SAMPLE

POINTS USED

STITCHES - NEEDLES

Rib 1/1 in round: multiple of 2 sts.

1st r. and next r.: (k1, p1) rep. across the entire r.

Reverse stocking stitch

1st r. and odd r. (RS): purl.

2nd r. and even r. (WS): knit.

STITCHES À CROCHET-HOOK

Chain stitch, single crochet, double crochet, treble crochet.

Filet net stitch: multiple of 2 ch 1

1st row: 1 tr in 7th ch from hook (first empty square), (1 ch, skip 1 base-ch, 1 tr in next ch) rep. running out all ch, turn.

2nd row and next rows: 4 ch (instead of 1st tr and 1 ch), skip 1-ch-space, 1 tr in next tr, (1 ch, skip next 1-ch-space, 1 tr in next tr) rep. across the entire row, working last tr in 3rd of 4-beg-ch of previous row.

2 crossed stitches: working on 3 ch/sts.; yo twice on crochet-hook and insert it into 1st of 3 base-ch/sts., yo and pull 1 loop through base-ch, yo and pull it through 2 loops on crochet-hook (=4 loops on crochet-hook.), yo, skip 1 ch and insert the hook into next ch/st., yo and pull 1 loop through base-ch (=5 loops on crochet-hook), (yo and pull it through 2 loops on crochet-hook) 4 times, ending the inverted Y shape group, 1 ch, 1 tr in the centre of the group, inserting the hook through 2 central loops of 2 sts. tog.

Crossed patterned stitch (diagram): multiple of 4 ch 1 4 turning ch.

1st row: yo twice and insert hook into 6th ch from hook, yo and pull 1 loop through base-ch, yo and pull it through 2 loops on crochet-hook (=4 loops on crochet-hook), yo, skip 1 ch and insert hook in next ch, yo and pull 1 loop through base-ch (5 loops on crochet-hook),(yo and pull it through 2 loops) 4 times, ending the inverted Y shape group, 1 ch, 1 tr in the centre of group, inserting the hook through 2 central loops of 2 sts. tog., (1 ch, skip 1 base-ch, 2 sts. crossed over 3 next ch) across the entire row and work 1 double tr in last ch, turn.

2nd row: 4 ch, 1 double tr in 1st of 2 crossed sts., 1 ch, (2 crossed tr working the 1st leg on 2nd st. of 2 previous crossed sts. and the 2nd leg on 1st st. of next 2 crossed sts., 1 ch) rep. until 2 sts. away from end of r., 1 double tr in 2nd st. of last group consisting of 2 crossed sts., 1 double tr in 4th beg-ch of previous row, turn.

3rd row: 4 ch, 2 crossed sts. working 1st leg on 1st double tr and 2nd leg on 1st of 2 next crossed sts., (1 ch, 2 crossed sts. working 1st leg on 2nd st. of 2 previous crossed sts. and 2nd leg on 1st st. of 2 next crossed sts.) rep. until 1 st. away from the end of r., working last st. of 2 crossed sts. into last double tr, 1 double tr in 4th beg. ch of previous row, turn.

Rep. 2nd and 3rd row reaching the stated length.

ABBREVIATIONS

RS = right side of work

WS = wrong side of work

NB = please note

st. / sts. = stitch / stitches

r. = row/rows

r. = round / rounds

ch = chain stitch

sc = single crochet

dc = double crochet

tr = treble crochet

double tr = double treble crochet

rev. stocking st. = reverse stocking st.

yo = yarn over

k = knit

rep. = repeat

rem. = remain / remaining

p = purl

fol. = follow / following

tog. = together

MEASURES

SIZE: 40/42

PROCEDURE

BACK

Central panel in net stitch

Using size no. 3 crochet-hook and rope col. yarn, cast-on 41 ch 4 turning ch and work in net st. (20 empty squares) following the diagram 1 until you have worked the 48th row (= 58 cm). Cut and tie off the yarn.

Side panels in crossed patterned stitch (x 2)

Using no. 3 crochet-hook and rope col. yarn, cast-on 128 ch 1 4 turning ch and work in crossed patterned st. following the diagram 2, at last, cut and tie off the thread. The armhole measures approx. 30 cm.

Work the second panel as given for first one, reversing all shaping.

FRONT

Central panel in net stitch

Work like central panel of back until the end of 26th row, then, for neckline shaping, cont. working 2 pieces separately. Each part consists of 8 empty squares. Do not work the 4 central empty squares (neckline).

After working 48 rows (58 cm), cut and tie off the yarn at the end of each shoulder.

Side panels in crossed patterned stitch (x 2)

Work as given for side panels of back.

SLEEVE (x 2)

Each sleeve consists of 1 central stripe worked with crochet-hook and 2 side panels worked with knitting needles.

Stocking Stitch panels (x 2)

For right side panel:

Using no. 5 knitting needles and rope col. yarn, cast-on 18 sts. and work in reverse stocking stitch.

1st r. (RS): purl.

2nd r. (WS): knit.

Across the next r. you are working the holes to make the string pass. This string will be used to close the sleeve.

3rd r.: (p4, yo) 4 times, p2[22 sts.]

4th r.: knit

Cont. in rev. stocking. st. and, at the same time, from 7th r., on right side, incr., 1 st. every 7 r. 18 times (first incr. at 7th r., last incr. at 126th r.). After working the 126th r. there are 40 sts.

For armhole shaping, from next r., on one side, start to bind-off the sts.

On side where you have made the increases, bind off first 4 sts., then cont. to decr. 2 sts. every 2 r. (every other r.) until there are 12 sts.

Bind off all rem. sts.

Left Side Panel:

Work as given for right panel, reversing the increases and decreases.

Central Strip

Using the crochet-hook and rope col. yarn, cast-on 120 ch. 1 4 turning ch and work 4 rows in crossed patterned st., foll. the diagram 2 of side panel. At last, cut and tie off the thread.

NB: before working 1st row in crossed patterned st., check that ch-string must have the same length as side panels worked in stocking st., if not, incr. or decr. some sts., considering that the number of sts. of patterned st. is multiple of 4 sts.

Assembling of the sleeve

Place the 2 side panels on both sides of central strip you have worked in patterned st. (after sewing the 3 pieces, the rev. stocking st. must be on RS), then, using darning needle and rope col. yarn, join the adjacent edges of 3 pieces on WS.

Hide the ends inside the fabric.

Sleeve string

Using the crochet-hook and black col. yarn, cast-on 120 ch, cut and tie off the yarn. On RS, using the rope col. yarn, work 1 dc in each ch, cut and tie off the yarn. On RS, using the black yarn work 1 r. in sc on 2 sides of dc-string, cut and tie off the yarn. Hide the ends inside the fabric.

Work the second sleeve as given for first one.

FINISHING

Assembling of front and back

Using crochet-hook and black yarn, work one row in dc, along the side edges of each central panel and along the long edge of each side panel. Place side 2 panels next to the sides of central panel of back and, using black thread, on RS, join the edges working one row in dc. It shapes a decorative raised rib.

Assemble and join the 3 pieces of front as given for back.

Place front on back (RS against RS) and, using darning needle and rope col. yarn, join the shoulders and sides. Always on WS, sew the undersleeve and then sew the top edges of the sleeves inside the armholes. Turn inside out the sweater (RS).

Neckline band

1st round: join the black yarn at centre of back neckline and, using the crochet-hook, work 1 dc in each st. around the neckline edge; 1 sc in 1st dc of the r. Cut and tie off the thread.

Join the white yarn at 1st st. of 1st round.

2nd round: 1 ch (never count it like 1st st.), 1 dc in each st. of the round, working 3 dc tog. on 3 central sts. of point of front neckline; 1 sc in 1st dc of the round.

3rd and 4th round: work like 2nd round. Cut and tie off the thread.

5th round: join the black yarn and work like 2nd round. Cut and tie off the thread.

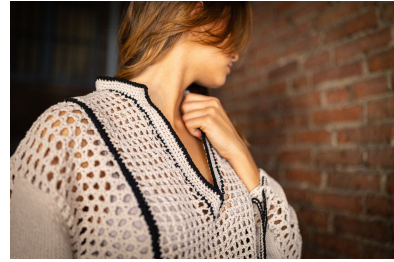
Lower band of the sweater

Using no. 4.5 circular needles and black yarn, pick-up all the sts. around the lower edge of sweater and work 22 r. in rib 1/1, at last, bind off all sts.

Hide the ends inside the fabric.

Pass the strings through the holes of lower bands of the sleeves and knot the ends. Tighten the lower band of the sleeves slightly and, using the strings, shape a little bow.

PHOTOGALLERY



Schema 1: Puntino rete-blei



Legenda

- punto
- ◊ simbolo
- simbolo
- ⊗ 2° a. bloccate

Schema 2: pannello laterale

