

IMPERIAL MAXY BAG

DIFFICULTY =

YARN = [Natural Bag](#) by Laines du Nord: 7 skeins x 100 grams of red col. 19.

CROCHET-HOOK = size 5

OTHERS = darning needle with silicon eye, scissors, pins, marker.



SKILL LEVEL: Easy

The bag has a cubic shape. Start from centre of base square and cont. working the main part of the bag, consisting of 4 square pieces: front, back and 2 sides. Work front and back in tr and 2 sides in alternated raised tr.

SAMPLE

POINTS USED

Chain stitch, single crochet, double crochet, treble crochet

Back ribbed treble crochet: insert the hook in back thread of base st. and work 1 tr.

Front post treble crochet: insert the hook into the space on the right of column of 1 base tr, from front to back and then to front again (get the hook out in space on the left

of the column), yo and pull (from front to back and again to front) a new loop on the right of the same column, (yo and pull it through 2 loops on crochet-hook) twice.

Back post treble crochet: insert the hook into the space on the right of column of 1 base tr, from back to front and again to back (get the hook out in space on the left of the column), yo and pull (from back to front and again to back) a new loop on the right of the same column, (yo and pull it through 2 loops on crochet-hook) twice.

2 crossed treble crochet: skip 1 base st., 1 tr in next st., 1 tr in skipped st. passing in front of st. that you just worked. When you work 2 back ribbed crossed tr, insert the hook into the back thread of base st.

ABBREVIATIONS

LD = right side of the work

LR = wrong side of the work

st. / sts. = stitch / stitches

ch = chain stitch

col. = colour

sc = single crochet

dc = double crochet

tr = treble crochet

FPtr = front post treble crochet

BPtr = back post treble crochet

rep. = repeat

fol. = follow / following

cont. = continue

MEASURES

PROCEDURE

BAG

Base (diagram 1)

Using the yarn, shape a magic ring.

1st round: 1 ch (never count it as 1st st.), 8 dc into the magic ring; pull the end of the yarn and tighten the ring; 1 sc in 1st dc of the round.

2nd round: 1 ch, (1 dc in next dc, 3 dc in next dc) 4 times; 1 sc in 1st dc of the round. [1 dc in each side, 3 dc in each corner]

From 3rd to 22nd round: 1 ch, (1 dc in each st. until central dc of 3-dc-corner-group, 3 dc in central corner dc) 4 times; complete the second part of 1st side working 1 dc in each st. until beg. ch; 1 sc in 1st dc of the round.

23rd round: rep. 22nd round, working 2 dc, instead of 3 dc, in each corner. Do not cut the yarn. [43 dc along each side, 2 dc in each corner st.]

Base measures: 31 cm.

Cont. working the main part of the bag, beg. from half side.

Main Part (diagram 2)

1st round: 3 ch (= 1st tr, also in next r.), 1 back ribbed tr in each of next 21 dc, 2 crossed back ribbed tr on 2 corner dc, (1 back ribbed tr in each of 43 sts. along next side, 2 crossed back ribbed tr on next 2 corner dc) 3 times, 1 ribbed tr in each of last 21 sts; 1 sc in 3rd beg. ch. [43 back ribbed tr along each side, 2 crossed tr. in each corner]

2nd round: 3 ch, 1 BPtr around next st., (1 FPtr around next st., 1 BPtr around next st.) 10 times, 2 crossed tr on 2 crossed tr of the corner, 1 tr in each of next 43 sts., 2 crossed tr on 2 crossed tr of next corner., 1 BPtr around next st., (1 FPtr around next st., 1 BPtr around next st.) 21 times, 2 crossed tr on 2 crossed tr of next corner, 1 tr in each of 43 next sts., 1 BPtr around next st., (1 FPtr around next st., 1 BPtr around next st.) 10 times; 1 sc in 3rd beg. ch.

Across the next round, reverse the positions of raised tr.

3rd round: 3 ch, 1 FPtr around next st., (1 BPtr around next st., 1 FPtr around next st.) 10 times, 2 crossed tr on 2 crossed tr of the corner, 1 tr in each of 43 next sts., 2 crossed tr on 2 crossed tr of next corner, 1 FPtr around next st., (1 BPtr around next st., 1 FPtr around next st.) 21 times, 2 crossed tr on 2 crossed tr of next corner, 1 tr in each of next 43 sts., 2 crossed tr on 2 crossed tr of next corner, 1 FPtr around next st., (1 BPtr around next st., 1 FPtr around next st.) 10 times; 1 sc in 3rd beg. ch.

From 4th to 25th round: rep. 2nd and 3rd round, 11 times. At the end of 25th round, the main piece of the bag measures 36 cm in height approx.

26th round: 1 ch (do not count it as 1st st.), 1 dc in same st. of ch and in each st. of the round; 1 sc in beg. dc.

27th round: 1 sc in each st. of the round, 1 sc in beg. sc. Cut and tie off the thread.

HANDLES OF THE BAG (x 2)

Cast-on 74 ch and leave 20 cm approx. tail, 1 turning ch.

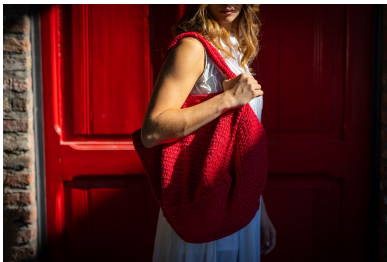
1st row: 1 dc in 2nd ch from hook and in each ch across the entire r., 1 turning ch (do not count the turning ch as one st.). [74 dc]

From 2nd to 6th row: 1 dc in 74 dc of the row, 1 turning ch. Cut and tie off the thread, leaving 20 cm approx. tail (for sewing).

Using the tails, sew 2 ends of each handle on last 6 rounds of main part of the bag, on both sides of back and front panel, like shown by the picture.

Using the darning needle, hide the ends inside the fabric.

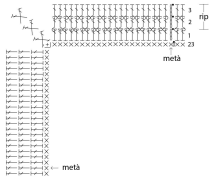
PHOTOGALLERY



Schema 1: inizio della base



Schema 2: corpo della borsa



Legenda

- ▲ inizio
- catenella
- m. bassissima
- × m. bassa
- ∨ 2 m. basse nella stessa m.
- ∇ 3 m. basse nella stessa m.
- | m. alta
- | m. alta in costa dietro
- | m. alta in rilievo davanti
- | m. alta in rilievo dietro
- × 2 m. alte incrociate
- × 2 m. alte incrociate in costa dietro