

# PLACE MAT AND COASTER

**DIFFICULTY** =

**YARN** = [Natural Bag](#) by Laines du Nord: 1 skein each col.: 5 (grey), 6 (dark-blue), 7 (dark aqua green)

**CROCHET-HOOK** = size 5

**OTHERS** = darning needle with silicon eye, scissors, pins, marker.



**SKILL LEVEL:** Easy

The amount of yarn depends on the number of placemats and coasters you need. You can alternate the colours like below or as you like. For different placemats you can work the central piece in tr instead of dc, keeping the same measure.

SAMPLE

POINTS USED

**Chain stitch, single crochet, double crochet, treble crochet.**

ABBREVIATIONS

**st. / sts.** = stitch / stitches

**ch** = chain stitch

**col.** = colour

**sc** = single crochet

**dc** = double crochet

**tr** = treble crochet

**foll.** = follow / following

**rep.** = repeat

**cont.** = continue

## MEASURES

## PROCEDURE

### PLACE MAT (diagram 1)

At first, work the central piece.

Using dark aqua green, cast-on 37 ch 1 turning ch.

**1st row:** 1 dc in 2nd ch from hook, 1 dc in each ch until the end, 1 turning ch (do not count the turning ch as 1st st., also in next r.). [35 dc]

**2nd row:** 1 dc in each dc, 1 turning ch. [35 dc]

**From 2nd to 53rd row:** rep. 2nd row and, at the end of 48th row, change the colour, using grey instead of dark aqua green yarn.

At the end of 53rd row, do not cut the yarn and cont. around the perimeter of the place mat, working in net st. like shown by the 1 and alternating the colours as foll.: rounds 1-2 with grey, rounds 3-4-5 with dark blue. At last, cut and tie off the yarn.

Hide the ends inside the fabric.

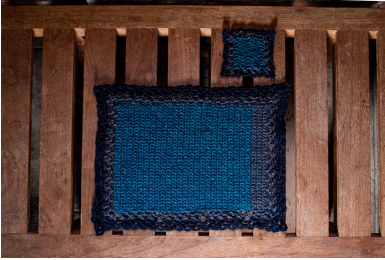
### COASTER (diagram 2)

Using dark aqua green, cast-on 11 ch 3 turning ch.

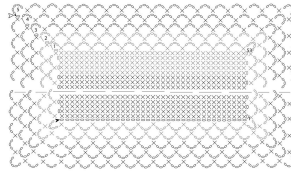
Foll. the diagram, work 5 rows in tr, then cont. in net st. around the perimeter, working the 1st round with grey yarn and 2nd round with dark blue yarn.

Hide the ends inside the fabric.

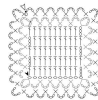
PHOTOGALLERY



Schema 1: tovaglietta



Schema 2: sottobicchiere



Legenda

- ▲ punto
- ▲ fide
- catenella
- + m. baciocina
- ⊖ m. bassa
- 1 m. bassa, 5 cat. e 1 m. bassa nella stessa m.
- ⊥ mezzo m. alta
- | m. alta