

OPEN-WORK PATTERN SWEATER

DIFFICULTY =

YARN = 5 balls x 25 grams each one, col. 3041 [CASHSILK LIGHT](#) by LAINES DU NORD

YARN = 5 balls x 50 grams, col. n. 10 [CILIEGIA](#) by LAINES DU NORD

KNITTING NEEDLES = 7 mm and 8 mm

CIRCULAR NEEDLES = with 7 mm points and 60 cm cables.

OTHERS = darning needle, stitch marker, pins, scissors, tape measure.



Use the yarns from 2 balls (1 thread each ball) as if they were a single thread (= double thread). Work front, back and sleeves using knitting needles in back-and-forth rows. Work the collar in round using circular needles.

SKILL LEVEL: Experiences

SAMPLE

10 x 10 cm: 13 sts. and 22 r. in moss st. using 8 mm needles.

POINTS USED

Rib 1/1 in back-and-forth rows.

1st r.: (k1, p1) rep. across the entire r.

2nd r. and next r.: work all sts. as they appear.

Rib 1/1 in round

1st round and next rounds: (k1, p1) rep. across the entire r.

Garter stitch: knit all r.

Moss stitch: even stitches.

1st r.: (k1, p1) across the entire r.

2nd r.: knit the purl sts. and vice versa.

Open-work stitch: 10 sts. 2 2 foll. the diagram.

Peacock stitch with 2 open-work sts. on both side: 22 sts. (2 sts. for 1st open-work, 18 sts. for peacock st., 2 for 2nd open-work).

1st f (RS): yo, k2tog.; k18; k2tog, yo

2nd r. (WS): k2; p18; k2

3rd r. (RS): yo, k2tog.; (k2tog.) 3 times, (yo, k1) 6 times, (k2tog.) 3 times; k2tog, yo

4th r. (WS): k2; p18 (p1 in every st. and 1 st. in every yo); k2

5th r. (RS): yo, k2tog.; k18; k2tog, yo

6th r. (WS): k2; p18; k2

7th r. (RS): yo, k2tog.; k18; k2tog, yo

8th r. (WS): k2; p18; k2

Always rep. from 3rd to 8th r. reaching the required length.

Binding off: work 2 sts., insert the point of left needle through first of 2 sts. on right needle, pass first st. over second one, * work next st. (on right needle there are 2 sts.), insert the point of left needle through first of these 2 sts., then pass first st. over second one *, rep. from * to * binding off as many times as necessary.

ABBREVIATIONS

RS = right side of work

WS = wrong side of work

SM = stitch marker

r. = row(s) / round(s)

st.(s) = stitch(es)

col. = color

k = knit

yo = yo

tog. = together

rep. = repeat

p = purl

foll. = follow(ing)

MEASURES

SIZE: 40

PROCEDURE

BACK

Using 7 mm needles, cast-on 64 sts. and, for band shaping, work 5 r. rib 1/1.

Cont. in moss st. using 8 mm needles. After working 52 r. (= 30 cm from rib band), for armholes shaping, on both edges, bind off 3 sts., then 2 sts. and 1 st.; there are 52 sts. When piece measures 56 cm, bind off all sts.

FRONT

Using 7 mm knitting needles and double thread, cast-on 64 sts. and, for band shaping, work 5 r. rib 1/1.

From next r., work in open-work st. until the end of panel.

Using 8 mm knitting needles, work as foll.: k2, (10 sts. in open-work st.) 6 times, k2. After working 52 r. (= 30 cm) in open-work st. and 5 modules, for armholes shaping, on both edges, bind off 3 sts., then 2 sts. and 1 st.; there are 52 sts.

After working 82 r., equal to 47 cm from rib band (= 8 vertical modules in open-work st. 2 r.), for neckline shaping, bind off 6 central sts. and cont. working two pieces separately, then on both sides of neckline, bind off 2 sts. 5 times (=10 sts. bound off, on each side of neckline).

After decreasing for neckline, at 56 cm from cast-on edge, bind off rem. 13 sts. for each shoulder.

FINISHING

Sew shoulders and sides (WS) of front and back, joining them.

Using circular needles with 7 mm points and double yarn, pick-up 55 sts. around neckline edge, close in round with the invisible closing and work 14 rounds rib 1/1. At last, fold the collar in half inwards and sew the sts. of last round at the base of the sts. of 1st round.

SLEEVE (x 2)

Using 7 mm knitting needles and double thread, cast-on 66 sts. and, for band shaping, work 5 r. rib 1/1.

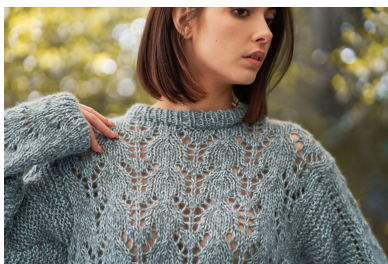
Using 8 mm needles, work as foll.: 8 sts. in garter st.; 22 sts. in peacock st. with 2 open-work sts. on both sides (= 2 sts. for first 1st open-work, 18 sts. in peacock st., 2 sts. for 2nd open-work); 8 sts. in garter st.

At the same time, on both edges, incr. 1 st. every 4 r., reaching 66 sts. (82 r. or 49 cm from rib band approx.). For armholes shaping, on both edges, bind off 3 sts., then 2 sts. and 1 st. When piece measures 52 cm approx. bind off the rem. 54 sts.

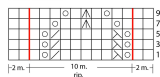
On WS, sew the undersleeves, then sew the top edges of the sleeves into the armholes.

Hide the ends.

PHOTOGALLERY



Punto traforato



Legenda

- 1 m. a dir.
- 1 gret.
- 2 m. linc. a dir.
- 1 acc. semplice
- 3 m. linc. a dir.

I disegni (L.D.) rappresentati nello schema, si leggono da destra verso sinistra.
Nelle parti non rappresentate nello schema, lavo 2 m. a dir., 10 m. a rov. (modulo di ripetizione), 2 m. a dir.
Rip. sempre dal 1° al 10° r.

Modellino

