

RAGLAN SWEATER

DIFFICULTY = Very hard

YARN = [ARAN TWEED](#) by LAINES DU NORD:

C1: 4 (5-5) balls x 50 grams; col. 15 (grey)

C2: 3 (4-4) balls x 50 grams; col. 6 (mustard)

C3: 3 (4-4) balls x 50 grams; col. 9 (green)

INTERCHANGEABLE CIRCULAR NEEDLES: size 5 mm and 5.5 mm points, 100 cm and 60 cm cable (for the sleeves).

OTHERS = stitch wire with caps, stitch marker, darning needle, scissors, tape measure



Work the garment top-down in round, starting from the band neckline. Work the sleeves around the armholes. Work the diagrams in stocking st. in round, reading them from bottom to top and from right to left. The instructions below refer to sizes S (M-L), so numbers before the brackets refer to size S/M, while numbers into the brackets refer to sizes M-L.

SAMPLE

17 stitches and 24 rows = 10 x 10 cm in stocking stitch using size 5.5 mm points. If needed, change size of knitting needles.

POINTS USED

Rib 2/2 in round: (k2, p2) rep. until the end of the round and across every next round.

Stocking stitch in round: knit all rounds.

Jacquard motifs: stocking stitch, alternating the colors like shown by A and B diagrams.

ABBREVIATIONS

C1 = color 1

C2 = color 2

C3 = color 3

RS = right side of work

WS = wrong side of work

SM = stitch marker

SMb = stitch marker of the beginning of the round

st. / sts. = stitch / stitches

col. = color

k = knit

skp = slip 1, knit 1, pass slipped stitch over

Bar incr. = bar increase [knit the stitch twice, once knit and second time through back loop, at last drop it from left needle]

k2tog = knit 2 stitches together

rep. = repeat

p = purl

fol. = follow / following

beg. = begin / beginning

cont. = continue / continuing

fol. = follow / following

MEASURES

SIZES S (M-L)

MEASURES OF THE GARMENT

Size shown by the picture: S

Chest circumference: 96 cm

Total height: 61 cm

Height from undersleeve: 37 cm

Circumference of top part of sleeve: 32 cm

Length from undersleeve: 43 cm

PROCEDURE

Using circular needles with size 5 mm point, 100 cm cable and C1 col., cast-on 84 (84-92) sts., place the SMb and close in round, making sure the stitches are facing the same direction.

Work the band (collar) rib 2/2.

From 1st to 12th round: (k2, p2) rep. until the end of round.

Use size 5.5 mm knitting needles.

13th round: to mark the sleeves, place the SM as foll.: beg. from SMb work p2, k2, p2, place one SM, k6 (6-8) for first sleeve, place one SM, p2, k2, p2, place one SM, k24 (24-26) for the front, place one SM, p2, k2 p2, place one SM, k6 (6-8) for second sleeve, place one SM, p2, k2 p2, place one SM, k24 (24-26) for the back.

14th round (with increases): p2, k2, p2, move the SM, **1 bar incr.**, knit until 1 st. before the SM, **1 bar incr.**, move the SM, p2, k2, p2, move the SM, **1 bar incr.**, knit until 1 st. before the SM, **1 bar incr.**, move the SM, p2, k2, p2, move the SM, **1 bar incr.**, knit until 1 st. before the SM, **1 bar incr.**, move the SM, p2, k2, p2, move the SM, **1 bar incr.**, knit until 1 st. before the end of the round, **1 bar incr.** [8 increases]

15th round: p2, k2, p2, move the SM, knit until 1 st. before the SM, move the SM, p2, k2, p2, move the SM, knit until 1 st. before the SM, move the SM, p2, k2, p2, move the SM, knit until 1 st. before the SM, move the SM, p2, k2, p2, move the SMb, knit until the end of round.

Rep. 14th and 15th round 22 (26-29) times more. There are 268 (300-332) sts.

DIVIDE THE STITCHES TO SHAPE THE SLEEVES

k3, leave 58 (66-74) sts. onto the stitch wire (place the taps at the ends) for first sleeve, remove the SM, cast-on 5 (6-7) sts. for the undersleeve, k3, remove the SM, k70 (78-86) for the front, k3, leave next 58 (66-74) sts. onto a stitch wire (place the taps at the ends) for second sleeve, cast-on 5 (6-7) sts. for the undersleeve, k3, remove the SM, knit last 70 (78-86) sts. of the round. [162 (180-198) sts.]

BODY

Knit 1 round using C1.

Cont. foll. the **diagram A**.

Knit 24 rounds using C2.

Cont. foll. the **diagram B**.

Knit 21 rounds using C3.

Only for sizes S and L

Round with decreases: k2tog, knit until 3 sts. from the end, skp, k1. [2 decreases]

For all sizes

Lower band

Using size 5 mm needles, work 8 rounds rib 2/2.

Bind off all sts.

SLEEVES

Move the 58 (66-74) sts. you have left onto circular needles with size 5.5 mm points and 60 cm cable, using C1 pick-up 4 (4 -6) sts. of the undersleeve and place 1 SMB in the center of these sts.

Work in stocking st. in round on 62 (70-80) sts.

Knit 1 round using C1.

Only for sizes S and L

Round with decreases: using C1, k2tog, knit until 3 sts. from the end, skp, k1 [2 decreases]

Only for size M

Round with decreases: using C1, knit distributing 4 decreases (= k2tog).

There are 60 (66-78) sts.

Cont. foll. the **diagram A**.

Using C2, work * 1 round with decreases: k2tog, knit until 3 sts. from the end, skp, k1 (2 decreases); then knit 7 rounds *, rep. from * to * twice more. There are 54 (60-72) sts.

Foll. the **diagram B**, using the indicated colors.

Using C3 work * 1 round with decreases: k2tog, knit until 3 sts. from the end, skp, k1 (2 decreases); then knit 5 rounds *, rep. from * to * 4 times more. There are 44 (50-62) sts.

Cont. working one **round with decreases**: knit distributing 0 (6-14) decr. (= k2tog) evenly; there are 44 (44-48) sts.

Band (cuff)

Using size 5 mm points, work 8 rounds rib 2/2. At last, bind off the sts. as they appear. Work the second sleeve as given for first one

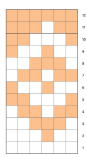
FINISHING

Secure and hide the ends. Wet and block. Wear!

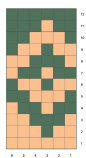
PHOTOGALLERY



SCHEMA A



SCHEMA B



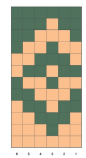
LEGENDA



CHART A



CHART B



KEY

