

PATTERNED YOKE SWEATER

DIFFICULTY = Intermediate

YARN = 5 (6-6-7) balls x 25 grams of col. 3103 [CASHSILK LIGHT](#) by LAINES DU NORD

YARN = 8 (9-10-12) balls x 25 grams of col. 5 SOFT CARDED MERINO by LAINES DU NORD

INTERCHANGEABLE CIRCULAR NEEDLES: size 5 mm and 6 mm points, 100 cm and 60 cm cables (for sleeves).

OTHERS = stitch marker, darning needle, scissors, tape measure.



Work the sweater in a single piece in round from top (yoke) to down (body). Work the sleeves in round on armholes.

The instructions below refer to sizes S (M-L-XL). The number before the bracket refers to size S, while numbers between the brackets refer to sizes M, L and XL.

Work the patterned stitch of yoke following the diagram, from bottom to top and from right to left.

Work the sweater using both yarns together (= double yarn).

SAMPLE

15 stitches and 21 rows = 10 x 10 cm in stocking stitch using size 6 mm knitting needles. If needed, change size of knitting needles.

POINTS USED

Rib 2/2 in round. Stocking stitch in round: knit across every round.

ABBREVIATIONS

RS = right side of work

WS = wrong side of work

SM = stitch marker

SMb = stitch marker of the beginning of the round

st. / sts. = stitch / stitches

col. = color

k = knit

skp = slip 1 stitch, knit 1 stitch, pass slipped stitch over

s2kp = slip 2 stitches together k-wise, knit 1 stitch, pass 2 slipped stitches over knitted stitch.

M1 = make one (using the point of needle lift horizontal yarn between two stitches and knit it through back of loop)

k = knit

yo = yarn over

k2tog = knit 2 stitches together

p = purl

foll. = follow / following

rep. = repeat / repeating

cont. = continue

MEASURES

SIZES S (M-L-XL)

MEASURES OF THE GARMENT

Size shown by the picture: S

Chest circumference: 96 cm

Total height: 56 cm

Height from undersleeve: 35 cm

Circumference of top part of sleeve: 30 cm

Length of sleeves from undersleeve: 44 cm

PROCEDURE

YOKE

Using circular needles with size 5 mm points and double yarn, cast-on 88 (88-92-96) sts., place the SMB and close in round making sure the stitches are facing the same direction.

Cont. working the **neckline band** in rib 2/2.

From 1st to 10th round: (k2, p2) rep. until the end of round.

Using size 6 mm points work in stocking st.

From 11th to 13rd round: knit.

14th round: knit distributing 28 (36-42-48) M1 uniformly [116 (124-134-144) sts.]

From 15th to 17th round: knit.

18th round: knit distributing 28 (32-34-36) M1 uniformly [144 (156-168-180) sts.]

Cont. foll. the diagram.

After working the patterned motifs of diagram, there are 208 (232-260-288) sts.

K1(3-6-8), then **leave the sts. for the sleeves** and work as foll.: 38 (42-48-56) sts. for first sleeve, cast-on 6 (6-6-8) sts. for undersleeve, k66 (74-82-88) for front, 38 (42-48-56) sts. for second sleeve, cast-on 6 (6-6-8) sts. for undersleeve, k66 (74-82-88) for back. [144 (160-176-192) sts.]

BODY

Cont. in stocking st. until the sweater measures 29 (30-31-32) cm from undersleeve approx.

Lower band of the sweater

Using size 5 mm points, work 14 rounds rib 2/2.

Bind off all sts.

SLEEVES

Move 38 (42-48-56) sts., you have left previously, onto circular needles with size 6 mm points, then knit 6 (6-6-8) sts. of the undersleeve, place SMB in the center of them, then

work in stocking st. in round on 44 (48-54-64) sts.

Cont. until the sleeve measures 37 cm from undersleeve.

Across next round decreases the sts. needed to tighten and shape the end of sleeve.

Round with decreases: knit, decr. (12 (12-14-20) sts. uniformly (k2tog); there are 32 (36-40-44) sts.

Band of the sleeve

Using size 5 mm points work 16 rounds rib 2/2. At last bind off all sts.

Work second sleeve as given for first one.

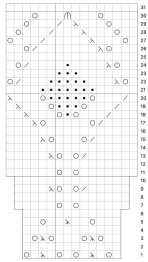
FINISHING

Hide the ends. Wet and block. Wear!

PHOTOGALLERY



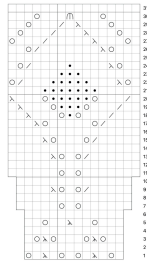
SCHEMA



LEGENDA

- dr
- p
- ⊗ get
- ⊗ 2ins
- ⊗ acc
- ⊗ accid
- ⊗ pz&acc

CHART



KEY

- K
- P
- ⊗ YO
- ⊗ K2TOG
- ⊗ SKP
- ⊗ SKP
- ⊗ K2tog-KP