

CABLE KNIT WAISTCOAT

DIFFICULTY = Intermediate

YARN = 7 (8-9) balls x 25 grams of col. 8 [SOFT CARDED MERINO](#) by LAINES DU NORD

INTERCHANGEABLE CIRCULAR NEEDLES: size 3.5 mm and 4 mm points, 80 cm cable.

OTHERS = cable needle, stitch marker, darning needle, scissors, tape measure



Work the vest from bottom to top. Work the body in a single piece in round, until the undersleeve. Top part consists of 2 separate pieces (front and back) that you work in back-and-forth rows.

The instructions below refer to sizes S (M). The number before the bracket refers to size S, while number between the brackets refers to sizes M.

SAMPLE

20 stitches and 32 rows = 10 x 10 cm in stocking st. using size 4 mm knitting needles. If needed, change size of knitting needles.

POINTS USED

Rib 2/2 in round. Rib 2/2 in back-and-forth rows. Stocking stitch in round. Stocking stitch in back-and-forth rows.

ABBREVIATIONS

RS = right side of work

WS = wrong side of work

SM = stitch marker

SMb = stitch marker of the beginning of the round

SMd = stitch marker to mark the diagram

SMds = stitch markers to mark the diagram

st. / sts. = stitch / stitches

col. = color

k = knit

k2tog = knit 2 stitches together

r. = row / rows

skp = slip 1, knit 1, pass slipped stitch over

Mlr: increase to the right (using left needle, lift the yarn between right and left needle from back to front, then k1).

Mll: increase to the left (using left needle, lift the yarn between right and left needle from front to back, then k1 through the back loop).

yo = yarn over

ssk = slip 1 st. k-wise, slip next st. too, move 2 sts. on left needle and knit them together through back loop)

sl 2 p-wise = slip 2 stitches purl-wise, from left to right knitting needle.

p = purl

1/1 sts. crossed to the right: cross 2 sts. to the right (slip 1 st. onto a cable needle and let it hang in back of work, k1, knit slipped st. off of cable needle).

1/1 sts. crossed to the left: cross 2 sts. to the left (slip 1 st. onto a cable needle and let it hang in front of work, k1, knit slipped st. off of cable needle).

7/7 sts. crossed to the right: cross 14 sts. to the right (slip 7 sts. onto a cable needle and let it hang in back of work, k7, knit slipped st. off of cable needle).

7/7 sts. crossed to the left: cross 14 sts. to the left (slip 7 sts. onto a cable needle and let it hang in front of work, k7, knit slipped st. off of cable needle).

foll. = follow / following

rep. = repeat / repeating

cont. = continue

MEASURES

SIZES S (M)

MEASURES OF GARMENT

Size shown by the picture: S

Chest circumference: 96 cm
Total height: 47 cm
Height from undersleeve: 34 cm

PROCEDURE

Using circular needles with size 4 mm points, cast-on 204 (224-244) sts., place the SMb (ref. to one side) and close in round making sure the stitches are facing the same direction, then cut the yarn. Place one SMb.

RIB2/2 BAND

From 1st to 10th round: (k2, p2) across the entire round.

BODY

At beginning work as foll.:

1st round: k27 (32-37), place 1 SMd, work 52 sts. foll. the diagram, place 1 SMd, k27 (32-37), place SM (opposite side) and knit until SMb.

Rep. 1st round until the body of vest measures 32 (33-34) cm approx.

Cont. working 2 pieces (front and back) separately **in back-and-forth r.**

TOP FRONT

Work first 106 (116-126) sts. and leave the rem. sts.

1st r. (RS): bind off 3 (5-7) sts., knit until SMd, foll. the diagram, move the SMd, knit until the end of r., turn. [106 (116-126) sts.]

2nd r. (WS): bind off 3 (5-7) sts., purl until SMd, foll. the diagram, move the SMd, purl until the end of r. [100 (106-112) sts.]

3rd r.: **k2**, k2tog, knit until SMd, foll. the diagram, move the SMds, knit until 4 sts. from the end, skp, **k2**.

Note: first and last 2 sts. of every r. ([highlighted in bold](#)) refer to 2 selvages.

4th r.: **sl 2 p-wise**, purl until SMd, foll. the diagram, move the SMds, purl until 2 sts. from the end, **sl 2 p-wise**.

From 1st to 12th r.: rep. 3rd and 4th r. 4 times more. [90 (96-102) sts. from the end of

12th r.]

13th r.: k2, knit until SMd, foll. the diagram, move the SMds, knit until 2 sts. from the end, **k2**.

14th r.:sl 2 p-wise, purl until SMd, foll. the diagram, move the SMds, purl until 2 sts. from the end, **sl 2 p-wise**.

Rep. 13th and 14th r. 8 (10-12) times more.

For **NECKLINE** shaping, work 2 pieces (shoulders) separately.

Left shoulder

For neckline shaping, work only first 29 (31-33) sts. Leave 32 (34, 36) central sts.

1st r. (LD): k2, knit until SMd, work only first 8 sts. of diagram, **k2**.

2nd r. (LR):sl 2 p-wise, work only first 8 sts. of diagram, purl until 2 sts. from the end, **sl 2 p-wise**.

3rd r.: k2, knit until SMd, work only first 6 sts. of the diagram, k2tog, **k2**.

4th r.:sl 2 p-wise, work only first 7 sts. of the diagram, purl until 2 sts. from the end, **sl 2 p-wise**.

5th r.: k2, knit until SMd, work only first 5 sts. of the diagram, k2tog, **k2**.

6th r.:sl 2 p-wise, work only first 6 sts. of the diagram, purl until 2 sts. from the end, **sl 2 p-wise**.

7th r.: k2, knit until SMd, work only first 4 sts. of the diagram, k2tog, **k2**.

8th r.:sl 2 p-wise, work only first 5 sts. of the diagram, purl until 2 sts. from the end, **sl 2 p-wise**.

9th r.: k2, knit until SMd, work only first 3 sts. of the diagram, k2tog, **k2**.

10th r.:sl 2 p-wise, work only first 4 sts. of the diagram, purl until 2 sts. from the end, **sl 2 p-wise**. [at the end of 10th r: 25 (27-29) sts.]

Cont. working 20 (22-24) r. as foll:

Rows on RS: knit until SMd, work only first 4 sts. of the diagram, **k2**.

Rows on WS:sl 2 p-wise, work only first 4 sts. of the diagram, purl until 2 sts. from the

end, **sl 2 p-wise**.

At last, leave these sts.

Right shoulder

Work as given for left shoulder, reversing all shaping.

TOP BACK

98 (108-118) sts.

1st r. (LD): bind off 4 (6-8) sts., knit until the end of r., turn.

2nd r. (LR): bind off 4 (6-8) sts., purl until the end of r. [90 (96-102) sts.]

3rd r.: **k2**, k2tog, knit until 4 sts. from the end, **skp**, **k2**.

4th r.: **sl 2 p-wise**, purl until 2 sts. from the end, **sl 2 p-wise**.

From 5th to 12th r.: rep. 3rd and 4th r. 4 times more. [at the end of 12th r.: 80 (86-92) sts.]

13th r.: **k2**, k2tog, knit until 2 sts. from the end, **k2**.

14th r.: **sl 2 p-wise**, purl until 2 sts. from the end, **sl 2 p-wise**.

Rep. 13th and 14th r. 23 (26-29) times more.

JOIN THE SHOULDER

Join in graft st. 25 (27-29) sts. of back and front you have left for each shoulder. Leave central sts. for neckline.

COLLAR

Using size 3.5 mm knitting needles, pick-up and knit 94 (100, 104) sts. around neckline, distributing the sts. as foll.: 30 (32-34) sts. along back neckline; 16 (17-17) sts. along left neckline; 32 (34-36) sts. along front neckline and 16 (17-17) sts. along right neckline. Close in round, place one SMb and work 7 rounds rib 2/2.

Bind off all sts.

ARMHOLE BAND

Using size 4 mm knitting needles, pick-up 73 (80, 84) sts. around armhole, beg. from

center of undersleeve. Close in round, place one SMb and work 3 rounds rib 2/2.

Bind off all sts.

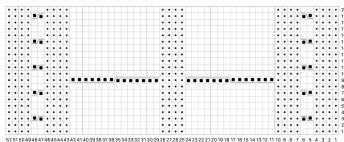
FINISHING

Hide the ends. Wet and block. Wear!

PHOTOGALLERY



SCHEMA



LEGENDA

- dr
- ◼ r
- ▣ 1/1 TD
- ▤ 1/1 TS
- ▨ 7/7 TD
- ▩ 7/7 TS