

JACQUARD YOKE SWEATER

DIFFICULTY = Very hard

YARN = [MERINO YAK](#) by LAINES DU NORD:

MC: 7 (8-9-10) balls x 50 grams; col. 20 (grey)

C1: 2 (2-3-3) balls x 50 grams; col. 19 (plum)

C2: 1 (2-2-3) balls x 50 grams; col. 35 (yellow)

C3: 1 (2-2-3) balls x 50 grams; col. 14 (fuchsia)

INTERCHANGEABLE CIRCULAR NEEDLES: size 4 mm - 4.5 mm points, 100 cm and 60 cm cable (for the sleeves).

OTHERS = stitch wires with caps, stitch marker, darning needle, scissors, tape measure.



Work the garment top-down in round, beginning from the neck. Work the sleeves around the armholes.

Work the diagrams in stocking st. in round, reading them from bottom to top and from right to left.

The instructions below refer to sizes S (M-L-XL), where the number before the parentheses corresponds to size S, while the numbers into the parentheses refer to sizes M-L-XL.

SAMPLE

21 stitches and 29 rows = 10 x 10 cm in stocking st. using size 4.5 mm points. If needed, change size of knitting needles.

POINTS USED

Rib 1/1 in round: (k1, p1) rep. until the end of the round and across every next round.

Stocking stitch in round: knit every round.

Jacquard motifs: stocking st. alternating colors as shown by the diagrams A and B.

ABBREVIATIONS

MC = main color

C1 = color 1

C2 = color 2

C3 = color 3

RS = right side of work

WS = wrong side of work

SM = stitch marker

SMb = stitch marker of the beginning of the round

st. / sts. = stitch / stitches

col. = color

k = knit

M1 = make one (using the point of needle, lift the horizontal strand between 2 stitches and knit it through the back loop)

yo = yarn over

k2tog = knit 2 stitches together

rep. = repeat / repeating

p = purl

cont. = continue / continuing

fol. = follow / following

MEASURES

SIZES S (M-L-XL)

MEASURES OF GARMENT

Size shown in the picture: S

Chest circumference: 98 cm

Total height: 57 cm

Height from undersleeve: 33 cm

Circumference of top part of sleeve: 29 cm

Length from undersleeve: 43 cm

PROCEDURE

Using the circular needles with size 4 mm points, 100 cm cable and MC, cast-on 108 (112-116-120) sts., place the SMB and close in round, making sure the stitches are facing the same direction.

COLLAR

Rib 1/1.

From 1st to 38th round: (k1, p1) rep. until the end of the round.

YOKE

Use size 4.5 mm points.

From 39th to 41st round: knit.

42nd round: knit, distributing 42 (48-54-60) M1 evenly. [150 (160-170-180) sts.]

43rd and 44th round: knit.

From 45th to 82nd round: foll. the **diagram A**, alternating the colors as instructed and working 30 (32-34-36) M1 across 51st, 64th and 73rd round evenly. [after working the diagram, there are 240 (256-272-288) sts.]

Cont. foll. the **diagram B**, alternating the colors as instructed and increasing across 1st round of the diagram (= 83rd round) as foll.:

Round with increases: using C1 work in knit st. 60 (64-68-72) M1 evenly. [300 (320-340-360) sts.]

Only for sizes M, L and XL

Round with increases: using MC, work in knit st. with 0 (14-28-42) M1 evenly. [0 (334-368-402) sts.]

For all sizes

k0 (3-6-8).

STITCH DIVISION TO SHAPE THE SLEEVES

Leave 52 (58-64-72) sts. onto a stitch wire (place the caps at the ends) for the first sleeve, cast-on 6 (6-6-8) sts. for the undersleeve, knit 98 (109-120-129) sts. for the front, leave 52 (58-64-72) sts. onto a stitch wire (place the caps at the ends) for the second

sleeve, cast-on 6 (6-6-8) sts. for the undersleeve, knit 98 (109-120-129) sts. for the back.

BODY

Using the MC, work on 208 (230-252-274) sts. of the front, back and undersleeves, reaching 27 (28-29-30) cm from the undersleeves.

Lower band

Using circular needles with size 4 mm points, work 14 rounds rib 1/1 in round. Bind off all sts.

SLEEVES

Move 52 (58-64-72) sts. you have left, onto the circular needles with size 4.5 mm points and 60 cm cable then, using MC pick-up 4 (4 -6 -6) sts. of the undersleeve and place 1 SMb at the center of these stitches.

Stocking st. in round on 58 (64-70-80) sts. reaching 37 cm from undersleeve approx.

Cont. working one **round with decreases**: knit decreasing 16 (20-22-30) sts. evenly (= k2tog); there are 42 (44-48-50) sts.

Band (cuff)

Using size 4 mm points, work 16 rounds rib 1/1. At last, bind off all sts. as they appear.

Work the second sleeve as given for first one

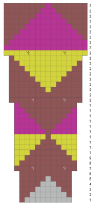
FINISHING

Hide the ends. Wet and block. Wear!

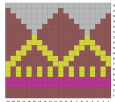
PHOTOGALLERY



SCHEMA A



SCHEMA B



LEGENDA



CHART A

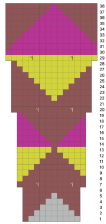
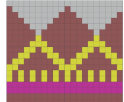


CHART B



KEY

