

# POEMA ALPACA SHAWL

**DIFFICULTY** = Hard

## MATERIALS

**Yarn:** **POEMA ALPACA** by Laines du Nord

Single size: 1 cake col. 104.

**Circular needles:** 7 mm tips with 80 cm cable.

**Other:** stitch marker, darning needle, scissors, tape measure, cable needle.



## SAMPLE

### TENSION

10 x 10 cm = 16 sts and 16 r in open-work st using size 7 mm knitting needles, (measured after blocking).

Work the correct tension to achieve the same result and measurements as the pattern. In case of different tension, try changing the needle size, either half a size up or down, until the correct measurement is achieved.

## POINTS USED

### STITCHES USED

**Purl garter stitch:** purl.

**Open-work stitch:** multiple of 4 stitches, following the instructions and the diagram.

## ABBREVIATIONS

### ABBREVIATIONS

**RS** = right side of the work

**WS** = wrong side of the work

**r** = row / s

**st / sts** = stitch / es

**col** = color

**k** = knit

**yo** = yarn over (wrap yarn around the right-hand needle, once)

**yo2** = yarn over twice (wrap yarn around the right-hand needle, twice)

**tog** = together

**rep** = repeat

**rep \*\*** = repeat from \* to \*

**p** = purl

**skp** = slip 1, knit 1, pass slipped stitch over (slip 1 stitch, knit the next stitch, pass slipped stitch over the knitted stitch).

**K2tog (knit 2 stitches together)** = insert the right-hand needle through the next 2 stitches on left-hand needle and knit them together.

**p2tog (purl 2 stitches together)** = insert the right-hand needle through the next 2 stitches on left-hand needle and purl them together.

**p3tog (purl 3 stitches together)** = insert the right-hand needle through the next 3 stitches on left-hand needle and purl them together.

**1/1 RC** = slip 1 stitch onto a cable needle and let it hang in back of work, knit 1, then knit stitch from cable needle.

## MEASURES

### MEASURES OF THE GARMENT - after blocking

**Single size**

**Height:** 80 cm

**Wingspan:** 160 cm

## PROCEDURE

### PATTERN

**Band in purl garter stitch.**

Cast-on 120 sts.

**R from 1 to 6:** purl.

**Open-work section**

**R 1:** p3, p2tog, k1, yo, skp, k2tog, \* yo2, skp, k2tog\*, rep \*\* until 6 sts from the end, yo2, skp, p4.

**R 2:** purl, working (k1 and p1) in every yo2.

**R 3:** p3, p2tog, p1, 1/1 RC, p2, \* p2, 1/1 RC \*, rep \*\* until 7 sts from the end, p2, k1, p4.

**R 4:** purl until the end of the row.

**R 5:** p3, p2tog, k1, yo, skp, k2tog, yo2, \* skp, k2tog, yo2 \*, rep \*\* until 8 sts from the end, skp, k2tog, yo2, p4.

**R 6:** purl, working (k1 and p1) in every yo2.

**R 7:** p3, p2tog, p1, 1/1 RC, p2, \* 1/1 RC, p2 \*, rep \*\* until 7 sts from the end, 1/1 RC, p1, p4.

**R 8:** purl until the end of the row.

**R from 9 to 88:** always rep from r 1 to 8.

Continue as follow:

**R 89:** p3, p3tog, yo, skp, k2tog, \* yo2, skp, k2tog \* rep \*\* until 6 sts from the end, yo2, skp, p4.

**R 90:** purl, working (k1 and p1) in every yo2.

**R 91:** p3, p3tog, k1, p2, 1/1 RC, \* p2, 1/1 RC \* rep \*\* until 7 sts from the end, p2, k1, p4.

**R 92:** purl until the end of the row.

**R 93:** p3, p3tog, k2tog, yo2, \* skp, k2tog, yo2 \* rep \*\* until 8 sts from the end, skp, k2tog, yo, p4.

**R 94:** purl, working (k1 and p1) in every yo2.

**R 95:** p3, p3tog, p1, 1/1 RC, p2, \* 1/1 RC, p2 \* rep \*\* until 7 sts from the end, 1/1 RC, p1, p4.

**R 96:** purl until the end of the row.

**R from 97 to 148.:** always rep from r 89 to 96.

**R 149:** p3, p3tog, k2tog, yo2, skp, k2tog, yo, p4.

**R 150:** purl, working (k1 and p1) in every yo2.

**R 151:** p3, p3tog, p1, 1/1 RC, p1, p4.

**R 152 and even R:** purl until the end of the row.

**R 153:** p3, p3tog, p6.

**R 155:** p3, p3tog, p4.

**R 157:** p3, p3tog, p2.

**R 159:** p3, p3tog.

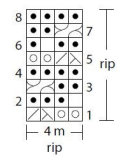
## FINISHING

Bind off the 4 rem sts. Weave in the ends. Block to size using blocking needles and pins.

## PHOTOGALLERY



Punto traforato (modulo di ripetizione)

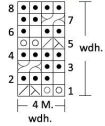


Legenda

- 1 dir
- 1 rov
- ⊖ 1 Get
- ⊗ 2ins
- ⊕ 1 acc
- ⊘ 1/1TD

If dispari (LD) si leggono da destra a sinistra  
If pari (LR) si leggono da sinistra a destra

Lochmuster (Wiederholungsmodul)

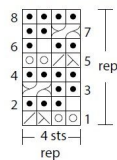


Legende

- 1 re.
- 1 li.
- ⊖ 1 U
- ⊗ 2ins
- ⊕ 1 Überzug
- ⊘ 1/1TD

Die ungeraden R. (RS) werden von rechts nach links gelesen  
Die geraden R. (LS) werden von links nach rechts gelesen

Open-work stitch (repetition module)



Key

- k1
- p1
- ⊖ yo
- ⊗ k2tog
- ⊕ skp
- ⊘ 1/1 RC

Read the odd rows (RS) from right to left  
Read the even rows (WS) from left to right