

ASYMMETRICAL POEMA SHAWL

DIFFICULTY = Hard

Yarn: [POEMA](#) by **Laines du Nord**: 2 balls, col 602

Circular needles: size 4 mm tips and 80 cm cable

Crochet hook: size 4 mm

Others: darning needle, stitch markers, scissors, pins, wires, tape measure.



SAMPLE

TENSION

10 x 10 cm = 18 stitches and 24 rows in stockinette stitch using size 4 mm knitting needles.

It is very important to check your gauge and measure the tension correctly to achieve the same results and measurements as the pattern.

If the gauge is different, try adjusting the needle size up or down by half a size until you get the correct measurement.

POINTS USED

STITCHES USED

Stockinette stitch:

R 1 (RS): knit.

R 2 (WS): purl.

Repeat Rows 1 and 2 throughout.

Lace and Bobbles Pattern: work over a multiple of 30 sts, following the diagram.

Repeat R 1 to 18 until the indicated length is reached.

Bobble: work the bobble in back-and-forth rows.

R 1 (RS): work (k1, yo) 3 times k1 into the same st (= 7 sts), turn. Make sure to work the stitches loosely (about 1 cm in length), to make it easier to insert the needle through all 7 stitches across the next row.

R 2 (WS): p7tog, turn.

ABBREVIATIONS

ABBREVIATIONS

RS = right side of the work

WS = wrong side of the work

col = color(s)

r = row(s)

st(s) = stitch(es)

k = knit

p = purl

rep = repeat

rep ** = repeat from * to *

foll = following

yo = yarn over

tog = together

bind off = bind off (using the skp technique).

skp = slip 1 st knit-wise, k1, pass slipped st over.

k2tog = knit 2 stitches together(insert the right needle into the next 2 sts on the left needle and knit them together).

p2tog = purl 2 stitches together(insert the right needle into the next 2 sts on the left needle and purl them together).

p7tog = purl 7 stitches together(insert the right needle into the next 7 sts on the left needle and purl them together).

selv = selvedge

MEASURES

FINISHED MEASUREMENTS

One size

Width: 265 cm (measured across the upper edge)

Height: 80 cm (from center point to upper edge)

PROCEDURE

DETAILED PATTERN INSTRUCTIONS

Using circular needles, cast on 164 sts.

R 1 (WS): slip 1 p-wise (selv st), purl all sts.

R 2 (RS): slip 1 k-wise (selv st), yo, k1, place 1 SM in this st, yo, knit to last 2 sts, k2tog.
Move the SM up to the corresponding st in each foll r

R 3 (WS): p2tog, purl all sts (yo included)

R 4 (RS): slip 1 k-wise, knit to SM, yo, k1 into the marked st, yo, knit to last 2 sts, k2tog.

R 5 (WS): rep R 3.

Beginning with the next r, start inserting the lace and bobble motifs while maintaining the same structure from the setup rows: increases, decreases, and yarn overs on either side of the marked center st. Follow both the diagram and the instructions below to work the lace and bobble patterns.

R 6 (RS): work the first 10 sts as in previous even rows, place a second SM on the right needle, work the next 30 sts foll the lace and bobble diagram, place another SM, k8, PM, work 30 sts from diagram, place a SM, k8, place a SM, work 30 sts from diagram, place a SM, knit remaining sts to last 2 sts, k2tog.

R 7 (WS): p2tog, purl all remaining sts (including yarn overs), slipping all SM as you come to them.

Continue working as established, repeating the 30-st lace and bobble diagram motif 3 times across the r, spacing each motif with 8 knit sts.

The SM help define the beginning and end of each lace motif throughout the pattern. Each lace and bobble motif (diagram) is worked over 30 sts and 18 r. On every RS row, follow the diagram; on WS rows of the motif, pull all sts.

R 8 to 23: work as established, maintaining the increases, decreases, and yarn overs, and continuing to follow the diagram for all 3 lace motifs.

R 24 to 27: work in stockinette stitch by repeating Rows 3 and 4 twice.

R 28 to 45: work as established, repeating the charted motif 3 more times directly above the previous 3 lace motifs.

R 46 to 49: work in stockinette stitch by repeating Rows 3 and 4 twice. You now have 164 sts on the needle.

R 50 to 67: repeat the 18-diagram r for only the 1st and 2nd lace motifs, continuing the established shaping of the shawl. Do not repeat the 3rd motif (skip the last st of the r)

R 68 to 71: work in stockinette stitch by repeating Rows 3 and 4 twice.

R 72 (RS): work as established up to the 2nd increase (i.e., the 2nd yo), k8, place a SM, work lace pattern over the next 30 sts, place a SM,

then continue foll the diagram to begin the 2 next lace motifs above the previous ones from the previous r.

R 73 to 89: work as established, maintaining the increases and decreases as before, and continue working the 3 lace motifs according to the diagram.

R 90 to 93: work in stockinette stitch by repeating Rows 3 and 4 twice.

R 94 to 111: work as established, repeating the 18-diagram r only for the 1st and 2nd motifs.

R 112 to 115: work in stockinette stitch by repeating Rows 3 and 4 twice.

R 116 to 133: work as established, repeating the 18-diagram r only for the 1st motif.

At this point, the 1st ball (color cream) will be nearly used up. Before continuing with the 2nd ball, and to maintain a smooth color gradient, set aside a small amount of the cream yarn for the shawl's edging.

R 134 to 137: work in stockinette stitch by repeating Rows 3 and 4 twice.

R 138 to 155: work as established, repeating the 18-r diagram over the previous motif area. At the end of R 155, the lace motif section is complete. Remove all SM except the one marking the st between the yarn overs.

R 156 to 164: continue in stockinette stitch, maintaining the shawl shaping with increases, decreases, and yarn overs on either side of the marked center st.

After completing R 164, begin decreasing sts on one side as follows:

R 1 (RS): bind off the first 12 sts, knit to the marked st, yo, k1 in the marked st, slip SM to this new st (do the same on each foll row) yo, knit to last 2 sts, k2tog.

R 2 (WS): p2tog, purl to end of r, including yarn overs.

R 3 (RS): slip 1 k-wise, knit to marked st, yo, k1 in the marked st, yo, knit to last 2 sts, k2tog.

R 4 (WS): p2tog, purl to end of r, including yarn overs.

R 5 to 10: rep Rows 3 and 4.

Rep R 1 to 10 again, decreasing 12 sts every 10 r.

Continue in this manner until 4 sts remain on the needles. Bind off these last 4 sts — do not cut the yarn.

FINISHING

Using a 4 mm crochet hook and continuing with the working yarn from the final bind-off r, work 1 r of sl st along the vertical (RS) edge, placing 1 sl st into each available st and keeping an even, relaxed tension. Make sure to maintain color continuity, when reaching the cream-colored section, switch to the yarn set aside at the start of the 2nd ball.

Weave in all ends. Block to finished measurements using blocking wires and pins.

INSTRUCTIONS

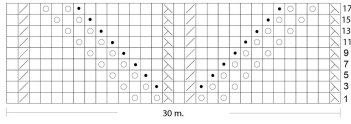
The shawl is worked starting from one of the short sides and knitted lengthwise,

alternating sections of stockinette stitch with lace and bobble motifs following the diagram.

PHOTOGALLERY



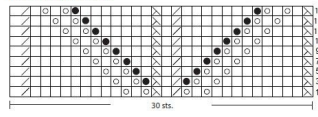
Punto traforato con noccioline



Legenda

- 1 dir.
 - 1 gettata
 - ▧ 2 m. ts. a dirto
 - ⊗ 1 acc. semplice
 - 1 nocciolina
- I f. dispari (L/D) si leggono da destra a sinistra
 I f. pari (L/R) non rappresentati nello schema si lavorando a rov.
 Il modulo verticale è formato da 18 f.

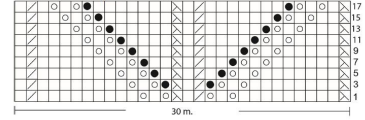
Lace and Bobbles Pattern



key

- k1
 - p0
 - ▧ 2bp
 - ⊗ slip
 - 1 bobble
- Read the odd r (RS) from right to left
 Put the even r (WS)
 The vertical module consists of 18 r

Lochmuster mit Noppen



Legende

- 1 re.
 - 1 Umschlag
 - ▧ 2 M. re. aus.
 - ⊗ 1 einf. Überzug
 - 1 Noppe
- Die ungeraden R. (RS) werden von rechts nach links gelesen.
 Die geraden R. (LS) die im Schema nicht dargestellt sind, werden li. gearbeitet.
 Das vertikale Modul besteht aus 18 R.