

# JACQUARD INTARSIA TURTLENECK SWEATER

**DIFFICULTY** = Intermediate

**Yarn:** [TEDDY B](#) by Laines du Nord

Size S/M: 4 balls (50 g), col 50 (dark brown)

**Yarn:** [SILKY WOOL](#) by Laines du Nord

Size S/M: 4 balls (50 g), col 2 (beige)

**Straight needles:** size 4 mm

**Others:** darning needle with large eye, pins, stitch markers, scissors, measuring tape.



## SAMPLE

### TENSION

10 x 10 cm = 13 sts and 22 r, worked in stockinette stitch using 5 mm needles

It is very important to check your gauge and measure the tension correctly to achieve the same results and measurements as the pattern.

If the gauge is different, try adjusting the needle size up or down by half a size until you get the correct measurement.

## POINTS USED

### STITCHES USED

**1x1 Rib**

**R 1 (RS):** (k1, p1) rep to end of row.

**R 2 and foll r:** work the sts as they appear.

### **Stockinette stitch**

**R 1 (RS):** knit all sts.

**R 2 (WS):** purl all sts.

Rep r 1 and 2 until reaching the length indicated.

**Jacquard Work:** Work with 2 balls of yarn simultaneously, carrying the unused yarn loosely along the WS and twisting the strands together at each color change (to avoid holes).

## ABBREVIATIONS

### **ABBREVIATIONS**

**RS** = right side of the work

**WS** = wrong side of the work

**SM** = stitch marker

**col** = color(s)

**r** = row(s)

**st(s)** = stitch(es)

**k** = knit

**p** = purl

**decr** = decrease(s)

**rep** = repeat

**rep \*\*** = repeat from \* to \*

**foll** = following

**bind off** = bind off (using the skp technique).

**M1** = make one (lift the horizontal strand between stitches and knit it through the back loop).

## MEASURES

### **FINISHED MEASUREMENTS**

Size shown in the picture: S/M

Upper body width: 54 cm

Lower body width: 52 cm

Sleeve length from dropped armhole: 41 cm

Upper sleeve circumference: 40 cm

Body length from underarm: 38 cm

Total length: 60 cm

## PROCEDURE

### DETAILED PATTERN INSTRUCTIONS

#### BACK

Using 4 mm needles and Teddy yarn, cast on 60 sts and work 6 r in 1x1 rib for the band. Continue working in stockinette stitch for 56 r. Then, begin the jacquard section using both Teddy and Silky Wool yarns, following diagram 1 for 16 r and repeating the 30-st motif twice across the r. While working the jacquard pattern, begin shaping the sides by increasing 1 st every 4 r, 4 times, as indicated in the diagram. From r 17 to 66 (50 r total), continue working using Silky Wool only on the resulting 68 sts. Beginning on r 67, start shaping the shoulders by binding off sts on both sides of the panel every 2 r as follows: first 4 sts, then 5 sts, again 4 sts and finally 5 sts, twice. At the same time, on r 69, bind off the central 14 sts for the neckline and continue working each part separately, binding off 1 st at the neck side every 2 r, twice.

#### FRONT

Work as given for the back, except for the neckline. On r 61 after completing the 16-row jacquard pattern, begin shaping the neckline by binding off the central 10 sts and continuing each side separately. Then, at each neckline edge, bind off: 2 sts every 2 r, twice and 1 st every 2 r, twice. At the same time, starting from r 67, shape the shoulders as given for the back shoulders.

#### SLEEVES

Using 4 mm needles and Silky Wool yarn, work 11 r in 1x1 rib. Continue working in stockinette stitch following diagram 2, increasing 1 st at each edge every 4 r, 3 times, to reach 48 sts. At the same time, starting from r 7, begin the jacquard pattern by alternating Silky Wool and Teddy yarns as indicated in the diagram. From r 23 to 48, continue working on the same st count using only Teddy yarn. From r 49 to 74, work following diagram 3 to create the second jacquard motif, increasing 1 st at each edge every 4 r, 5 times. After completing r 74, bind off all 58 sts. Make the second sleeve as given for the first one.

#### ASSEMBLY AND FINISHING

Sew all seams on the WS.

Sew one shoulder seam.

**Neck:** using 4 mm needles, pick up evenly 42 sts along the front neckline and 32 sts along the back neckline. 74 sts total. Work 38 r in 1x1 rib, then bind off all sts.

Sew the second shoulder and join the neckband seam along one side.

Pin the upper edge of one sleeve along the center section of the armhole edge (joining front and back panels), matching the center of the

sleeve with the shoulder seam. Sew the sleeve in place. Repeat the same for the second sleeve on the opposite side. Finally, sew the side seams and underarms.

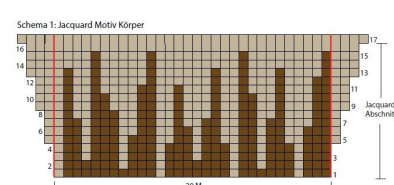
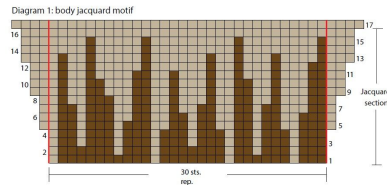
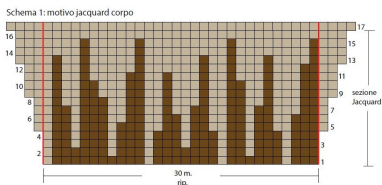
Weave in all ends. Wet and block.

## INSTRUCTIONS

The garment has a relaxed fit, making it suitable for multiple sizes. The sweater is made up of 2 identical panels (front and back), sleeves, and a turtleneck collar. The body and sleeves feature jacquard motifs worked with both yarns. When making M1 increases on both sides of a row, work 1 increase after the first st and 1 increase before the last st. To keep track of the number of r worked with Teddy yarn sections, it is recommended to place a stitch marker (SM) at the beginning of each row.

## PHOTOGALLERY





**Legenda**  
 ■ 1 m. con il filato Teddy B col 54 (beata di mono)  
 ■ 1 m. con il filato Silky Wood col. 02 (beige)  
 Lavorazione a m. rasata diritta jacquard  
 I f. dispari (RS) lavorati a dir. si leggono da destra a sinistra  
 I f. pari (RS) lavorati a rev. si leggono da sinistra a destra

**key**  
 ■ 1 st with Teddy B yarn, col 54 (dark brown)  
 ■ 1 st with Silky Wood yarn, col. 02 (beige)  
 Jacquard stockinette stic h  
 Read the knitted odd rows (RS) from right to left  
 Read the purled even rows (RS) from left to right

**Legende**  
 ■ 1 M. mit dem Garn Teddy B Fb. 54 (dunkelbraun)  
 ■ 1 M. mit dem Silky Wood Fb. 02 (beige)  
 Jacquard Verarbeitung glatt rechts  
 Die angegebenen R. (RS) rechts gestrickt, werden von rechts nach links gelesen  
 Die geraden R. (RS) links gestrickt, werden von links nach rechts gelesen

