

## TWO COLOR VEST

**DIFFICULTY** = Very hard

**Yarn** = **PLUME** by LAINES DU NORD Size S (M-L-XL): 150 (165-180-195) grams, col 2 (cream)

**Yarn** = **LUXURY SILK** by LAINES DU NORD Size S (M-L-XL): 150 (165-180-195) grams, col 25 (yellow)

**Circular needles** = size 4.5 points, 60- and 100 cm cable

**Crochet-hook** = size 4.5 mm

**Other** = waste yarn, darning needle, stitch marker, scissors, tape measure, 4 buttons 2 cm in diameter.



### SAMPLE

10 x 10 cm = 20 sts and 30 r in patterned st using size 4.5 mm crochet-hook and Luxury Silk yarn.

It is very important to check your gauge and measure the tension correctly to achieve the same results and measurements as the pattern. If the gauge is different, try adjusting the needle size up or down by half a size until you get the correct measurement.

### POINTS USED

#### **Rib 1x1**

**R (or round) 1:** (k1, p1) across the entire r or (p1, k1) across the entire r.

**R (or round) 2 and next r (or rounds):** work the sts as they appear.

**Stockinette stitch in flat**

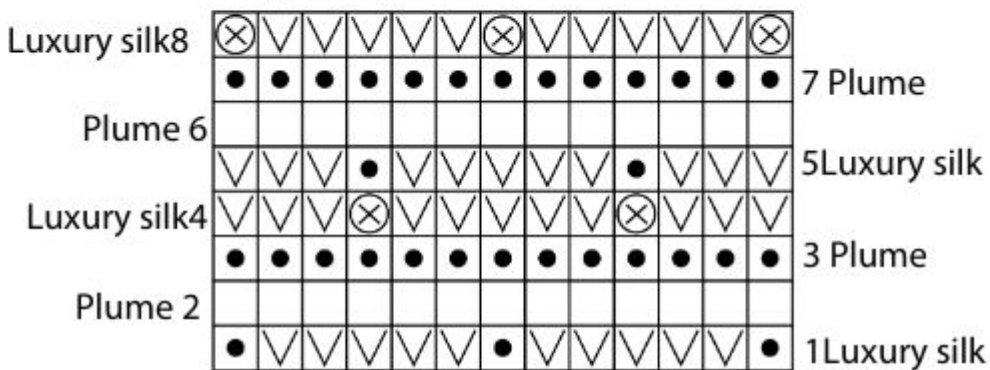
**R 1 (RS):** knit.

**R 2 (WS):** purl.

Rep r 1 and 2 until you have reached your desired length.

**Patterned stitch:** multiple of 6 stitches, following the diagram and instructions below.

Diagram: patterned stitch



key

- k1
- p1
- ∇ slip 1 stitch purl-wise with yarn in back
- ⊗ plume dtitch (insert the right needle under luxury yarn you have slipped across row 1, insert the needle into the first stitch of left needle too, knit dropping the plume stitch of the previous round  
Work the odd r on WS, the even r on RS

## ABBREVIATIONS

**RS** = right side of the work

**WS** = wrong side of the work

**SM** = stitch marker

**col** = color(s)

**st(s)** = stitch(es)

**k** = knit

**p** = purl

**rep** = repeat

**rep \*\*** = repeat from \* to \*

**bind off** = bind off (using the skp technique)

**sl 1p** = slip 1 stitch purl-wise from left to right needle, with yarn in back of work.

**k2tog** = knit 2 stitches together (insert the right needle through next 2 stitches on left needle and knit them together).

**skp** = slip 1, knit 1, pass slipped st over (slip 1 st knit-wise, k1, pass slipped st over).

## MEASURES

### FINISHED MEASUREMENTS

Size shown in photo: S - other sizes: M-L-XL

Chest circumference: 86 (92-98-104) cm

Height: 50 (56-62-68) cm

Body height from the undersleeve: 28 (34-40-46) cm

Sleeve cap circumference: 46 (46-52-58) cm

## PROCEDURE

### DETAILED PATTERN INSTRUCTIONS

#### BODY

Using size 4.5 mm crochet-hook, 100 cm cable and Luxury Silk (yellow) col 25 yarn, cast-on 194 (207-207-220) sts and, for band shaping, work 12 r rib 1x1.

Continue in pattern st (diagram), alternating Plume (cream) and Luxury Silk (yellow) yarn as follow and shaping the rib 1x1 bands of 2 front at beginning and end of the r.

**R 1 (WS):** using yellow yarn, (k1, p1) 3 times for the first band; (sl 5p, p1) rep until 6 sts remain; (p1, k1) 3 times for the second band.

**R 2 (RS):** using yellow yarn, (k1, p1) 3 times; switch to cream yarn and sl 1p, then knit until 7 sts from the end, sl 1p; switch to yellow yarn and (p1, k1) 3 times.

**R 3:** using yellow yarn (k1, p1) 3 times; switch to cream yarn and sl 1p, then purl until 7 sts from the end, sl 1p; switch to yellow yarn and (p1, k1) 3 times.

**R 4:** using yellow yarn work (k1, p1) 3 times, sl 4p, \*1 plume stitch (= insert the right needle under the yellow slipped thread of r 1 or 3 below, insert the needle into the 1st st on the left needle, knit, dropping the plume stitch of the previous r) \*, rep from \* to \* until 7 sts remain, sl 1p, (p1, k1) 3 times.

**R 5:** using yellow yarn, (k1, p1) 3 times, sl 4p, \* with yarn in back of work, purl the stitch you have worked with yellow yarn across previous r, slip purl wise the 5 sts you have worked with cream yarn across the previous row\*, rep \*\* until 7 sts remain, sl 1p, (p1, k1) 3 times.

**R 6:** using yellow (k1, p1) 3 times; switch to cream yarn and sl 1p, then knit until last 7 sts, sl 1p, switch to cream yarn and (p1, k1) 3 times.

**R 7:** using yellow yarn (k1, p1) 3 times; switch to cream yarn and sl 1p, then purl until last 7 sts remain, sl 1p; switch to yellow yarn and (p1, k1) 3 times.

**R 8:** using yellow yarn, (k1, p1) 3 times, sl 2p, \*1 plume (= insert the right needle under slipped yellow thread of r 1, insert the needle into the 1st st on left needle, knit, dropping the plume st of the previous r) \*, rep from \* to \* until 7 sts remain, sl 1p, (p1, k1) 3 times.



---

Rep r 1 to 8, 9 (11-11-13) times and, at the same time, shape 2 (3-4-4) buttonholes every 27 (29-25-29) r on right front.

Buttonhole shaping: p1, k1, bind off 3 sts, chain 4 on left needle, move the 1st st from left to right needle, pass the 2nd st (you have slipped from left needle) and knit all sts of the buttonhole.

After working the body of the vest, work separately 49 (52-52-55) sts for the right front, 48 (52-52-55) sts for the left front, 97 (103-103-110) sts for the back.

## UPPER BACK

Work the sts of the back and leave the sts of 2 fronts.

Work in patterned st following the diagram and decr 1 st on both side across the RS rows, 3 times.

Continue in patterned st, until you have reached 20 (20-26-28) cm, that is the heigh of the armhole.

Continue in patterned st and shape the shoulders, decr 1 st on both sides every r, until the remaining sts measure 18 (18-22-24) cm for the neck width. Loosely bind off all sts.

## UPPER RIGHT FRONT

Pick up the sts you have left and work in patterned st following the diagram from the point where you have stopped and, at the same time, shape 2 (2-2-2) buttonholes every 27 (29-25-29) r in rib band.

**R 1 (RS):** 6 sts rib 1x1, skp, work the remaining sts in patterned st.

**R 2 (WS):** work in patterned st and rib 1x1 (6 sts of the band).

**R 3:** rep the r 1.

**R 4.:** rep the r 2.

**R 5:** rep the r 1.

Work 11 (15-15-19) cm following the diagram and rib 1x1 band.

Shape the V-neckline as follow:

**R 1 (RS):** 6 sts rib 1x1, skp, continue in patterned st.

**R 2 to 5:** work in in patterned st and 6 sts rib 1x1 (band).

Rep r 1 to 5, 6 times.

Leave 6 sts for the rib 1x1 band and bind off the remaining sts loosely.

### UPPER LEFT FRONT

Pick up the sts you have left and work in patterned st following the diagram from the point where you have stopped.

**R 1 (RS):** patterned st until 8 sts remain, k2tog, 6 sts rib 1x1 (band).

**R 2 (WS):** 6 sts rib 1x1, remaining sts in patterned st.

**R 3:** rep the r 1.

**R 4.:** rep the r 2.

**R 5:** rep the r 1.

Work 11 (15-15-19) cm following the diagram and rib 1x1 band.

Shape the V-neckline as follow:

**R 1 (RS):** patterned st until 8 sts remain, k2tog, 6 sts rib 1x1 (band).

**R 2 to 5:** 6 sts rib 1x1, remaining sts in patterned st.

Rep r 1 to 5, 6 times.



Leave 6 sts for the rib 1x1 band and bind off the remaining sts loosely.

### **BACK NECKLINE BAND**

Pick-up 6 sts you left at right front and using yellow yarn work rib 1x1 reaching the center of back neckline. At last, bind off all sts as they appear.

Pick-up 6 sts you have left at left front and work as given for right front band.

Using the darning needle and yellow yarn, join the 2 ends of neckline bands (at center).

### **ARMHOLE BANDS**

Using yellow yarn, pick up the sts around the armhole and work 7 rounds rib 1x1 in round with del Magic Loop technique. Bind off all sts loosely. Work the second band as given for the first one.

## FINISHING

Sew the buttons on left front band, opposite the buttonholes.

Weave in all ends.

The garment is worked in flat (back-and-forth rows), bottom up and seamless. The sleeves are worked in the round with magic loop technique. The instructions below refer to size S. For sizes M-L-XL refer to the numbers in the brackets.

## PHOTOGALLERY

