

# SOFT LINO STRIPED PATTERN SWEATER

**DIFFICULTY** = Intermediate

**Yarn** = **SOFT LINO** by LAINES DU NORD, ball x 50 grams (135 m) Sizes M (S; L): 5 (5; 6) balls, white color (1). Sizes M (X; L): 3 (2; 3) balls, yellow ochre color (50).

**Circular needles** = size 3- 4- mm points, 100- 60- cm (for sleeves) cables.

**Other** = darning needle, stitch marker, scissors, tape measure, waste yarn.



## SAMPLE

10 x 10 cm = 21 stitches and 23 rows, in stockinette stitch using size 4 mm points

It is very important to check your gauge and measure the tension correctly to achieve the same results and measurements as the pattern. If the gauge is different, try adjusting the needle size up or down by half a size until you get the correct measurement.

## POINTS USED

### **Rib 1x1 in round**

**Round 1 and next rounds (RS):** (k2, p2) to the end of the round.

**Stockinette stitch in round (RS):** knit every round.

**Patterned stitch:** alternate horizontal stripes in stockinette stitch and eyelets stitch, and at the same time alternate two colors following diagrams 1-2-3.

## ABBREVIATIONS

**RS** = right side of the work

**WS** = wrong side of the work

**SM** = stitch marker

**SM (BOR)** = stitch marker of the beginning of the round

**col** = color(s)

**st(s)** = stitch(es)

**k** = knit

**p** = purl

**rep** = repeat

**rep \*\*** = repeat from \* to \*

**tog** = together

**bind off** = bind off (using the skp technique)

**skp** = slip 1, knit 1, pass slipped st over (slip 1 st knit-wise, k1, pass slipped st over).

**yo = yarn over**

**1 incr** = 1 increase (using the point of the needle, lift the horizontal strand between two stitches and knit it through the back loop).

**k2tog** = knit 2 stitches together (insert the right needle through next 2 stitches of the left needle and knit them together).

## MEASURES

**Size shown in photo** = M

**Chest circumference** = 102 cm

**Heigh** = 48 cm

**Body heigh from the undersleeve** = 28 cm

**Upper sleeves circumference** = 32 cm

**Sleeve length (from undersleeve to the end of the cuff)** = 12 cm

## PROCEDURE

### DETAILED PATTERN INSTRUCTIONS

Diagram 1

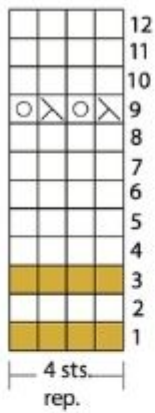


Diagram 2

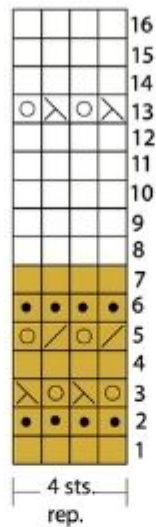
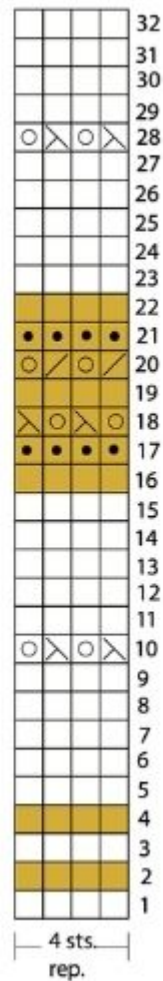


Diagram 3



key

Yarn Colors

- white
- yellow ochre

Stitches used

- k1
- p1
- yo
- k2tog
- skip

## YOKE

Using size 3 mm points, 100 cm cable and white yarn, cast-on 100 (96; 108) sts, place the SM (BOR) and close in round (do not twist the sts), then knit first and last st tog.

Work the **collar** rib 1x1.

**Round 1 to 10:** \* k1, p1 \*, rep \*\* to the end of the round.

Switch to size 4 mm points and continue in stockinette st with white yarn.

**Round 11 to 13:** knit.

**Round 14:** knit using white yarn and distributing 48 (42; 52) incr. [148 (140; 156) sts]

**Round 15:** knit.

Continue in patterned st, alternating the colors and following the diagrams.

**Round 16 to 27:** follow diagram 1.

**Round 28:** knit using white yarn and distributing 74 (66;76) incr. [222 (206; 232) sts]

**Round 29:** knit using white yarn.

**Round 30 to 45:** follow diagram 2.

**Round 46:** knit using white yarn and distributing 70 (66; 80) incr. [292 (272; 312) sts]

**Round 47:** knit using yellow ochre yarn.

**Round 48 to 59:** follow diagram 1.

**Round 60:** knit using yellow ochre yarn and distributing 44 (36; 56) incr. [336 (308; 368) sts]

**Round 61:** knit using yellow ochre yarn.

**Round 62 to 77:** follow diagram 2.

For body and sleeves shaping, work as follow: using yellow ochre yarn, for first sleeve leave first 64 (60; 70) sts onto a waste yarn, cast-on 4 (4; 6) sts for the undersleeve, k104 (94; 114) for the front, for second sleeve leave next 64 (60; 70) sts onto a waste yarn, cast-on 4 (4; 6) sts for the undersleeve, 104 (94; 114) sts for the back. [216 (196; 240) sts]

## **BODY**

Continue in patterned stitch following **diagram 3**, alternating stockinette stitch and eyelets st, with two colors. At approx. 26 (25; 27) cm from the undersleeve, switch to size 3 mm points and, for **lower band** shaping, work 12 rounds rib 1x1. At last, bind off all sts as they appear.

## SLEEVES

Return 64 (60; 70) sts you have left onto the circular needles (size 4 mm points and 60 cm cable); then, using yellow ochre yarn, pick-up and knit 4 (4; 6) sts of the undersleeve, placing the SM (BOR) in the center of these sts, then work in the round. [68 (64; 76) sts]

Continue in the round and work 1 round in stockinette stitch, then patterned stitch following **diagram 3** once.

**Band (or cuff):** switch to 3 mm points and work 6 rounds rib 2x2. Bind off all sts as they appear.

Work the second sleeve as given for the first one.

## FINISHING

Weave in all ends. Wet and block.

Work the garment top down in the round, with round yoke. Work the sleeves from the openings at the edges of the yoke. When you work in the round, place 1 SM (BOR) at beginning of the first round and move it at beginning of every round. Work following the jacquard diagrams: 1, 2, 3, 4. Read the rows from right to left. Size grading: first number corresponds to size M shown in photo; two numbers into the brackets correspond to size S and L.

PHOTOGALLERY

