

LINILK JACQUARD SWEATER

DIFFICULTY = Intermediate

Yarn: [LINILK](#) by LAINES DU NORD Sizes M (S; L): 5 (5; 6) balls, cream color (1). Sizes M (X; L): 1 (1; 1) ball, coral color (9).

Circular needles: size 3- 4- mm points, 100- 60- cm (for sleeves) cables.

Other = darning needle, stitch marker, scissors, tape measure, waste yarn.



SAMPLE

10 x 10 cm = 21 stitches and 23 rows, in stockinette stitch using size 4 mm points

It is very important to check your gauge and measure the tension correctly to achieve the same results and measurements as the pattern. If the gauge is different, try adjusting the needle size up or down by half a size until you get the correct measurement.

POINTS USED

Rib 2x2 in round

Round 1 and next rounds (RS): (k2, p2) to the end of the round.

Stockinette stitch in round (RS): knit every round.

ABBREVIATIONS

RS = right side of the work

WS = wrong side of the work

SM = stitch marker

SM (BOR) = stitch marker of the beginning of the round

col = color(s)

st(s) = stitch(es)

k = knit

rep = repeat

rep ** = repeat from * to *

tog = together

bind off = bind off (using the skp technique)

skp = slip 1, knit 1, pass slipped st over (slip 1 st knit-wise, k1, pass slipped st over).

1 incr = 1 increase (using the point of the needle, lift the horizontal strand between two stitches and knit it through the back loop).

MEASURES

Size shown in photo = M

Chest circumference = 102 cm

Heigh = 54 cm

Body heigh from the undersleeve = 33 cm

Upper sleeves circumference = 30 cm

Sleeve length (from undersleeve to the end of the cuff) = 17 cm

PROCEDURE

DETAILED PATTERN INSTRUCTIONS

Diagram 1

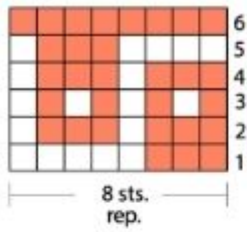


Diagram 2

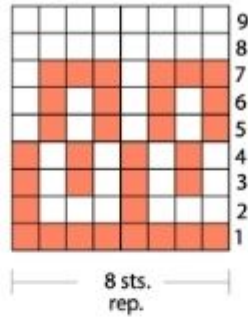


Diagram 3

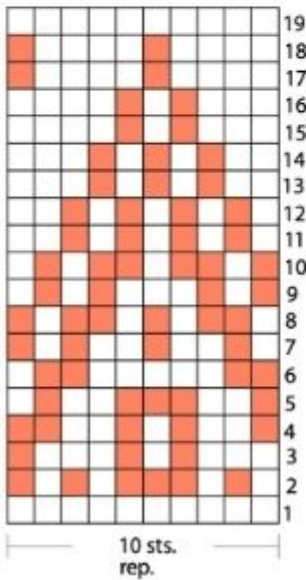
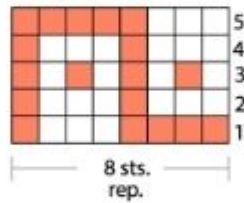




Diagram 4



key

-  k1 cream col.
-  k1 coral col.

YOKE

Using size 3 mm points, 100 cm cable and coral yarn, cast-on 100 (96; 108) sts, place the SM (BOR) and close in round (do not twist the sts), then knit first and last st tog.

Work the **collar** rib 2x2.

Round 1 to 8: * k2, p2 *, rep ** to the end of the round.

Switch to size 4 mm points and continue with coral yarn.

Round 9 and 10: knit.

Round 11: knit, distributing 52 (48; 52) incr. [152 (144; 160) sts]

Round 12: knit.

Work in jacquard, alternating 2 colors and following the diagrams.

Round 13 to 18: follow diagram 1.

Round 19: knit using coral yarn and distributing 24 (24; 32) incr. [176 (168; 192) sts]

Round 20 to 28: follow diagram 2.

Round 29: knit using cream yarn and distributing 74 (72; 78) incr. [250 (240; 270) sts]

Round 30 to 32: using cream yarn, knit.

Round 33 to 51: follow diagram 3.

Round 52: using cream yarn, knit.

Round 53o: knit using cream yarn and distributing 86 (72; 98) incr. [336 (312; 368) sts]

Round 54 to 56: knit using cream yarn.

Round 57 to 61: follow diagram 4.

Continue working 8 (6-12) rounds in knit st, using cream yarn.



For body and sleeves shaping, work as follow: using cream yarn, for first sleeve leave first 64 (60; 70) sts onto a waste yarn, cast-on 4 (4; 6) sts for the undersleeve, k104 (96; 114) for the front, for second sleeve leave next 64 (60; 70) sts onto a waste yarn, cast-on 4 (4; 6) sts for the undersleeve, 104 (96; 114) sts for the back. [216 (200; 240) sts]

BODY

Stockinette st in round reaching 31 (30; 32) cm from the undersleeve.

Lower band: switch to size 3 mm points and work 8 rounds rib 2x2. Bind off all sts as they appear.

SLEEVES

Return 64 (60; 70) sts you have left onto the circular needles (size 4 mm points and 60 cm cable); then, using cream yarn, pick-up and knit 4 (4; 6) sts of the undersleeve, placing the SM (BOR) in the center of these sts, then work in the round. [68 (64; 76) sts]

Continue working 50 rounds in stockinette st: approx. 15 cm.

Band (or cuff): switch to 3 mm points and work 6 rounds rib 2x2. Bind off all sts as they appear.

Work the second sleeve as given for the first one.

FINISHING

Weave in all ends. Wet and block.

Work the garment top down in the round, with round yoke. Work the sleeves from the openings at the edges of the yoke. When you work in the round, place 1 SM (BOR) at beginning of the first round and move it at beginning of every round. In jacquard work,

twist the two colors at each color change to prevent holes. Move the unused yarn on the WS of the previous round and cover it with the stitches of the working color until the next color change. Work following the jacquard diagrams: 1, 2, 3, 4. Every square of the diagrams corresponds to k1; read the rows from right to left. Size grading: first number corresponds to size M shown in photo; two numbers into the brackets correspond to size S and L.

PHOTOGALLERY

