

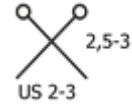
ARMÉ

COMPOSITION: 59% Metallic Polyester, 41% Polyamide

CLEW: € 25 grs. - 250 mts. - 0,88 oz. - 273 yds.



Metric 2,5 - 3
US C/2 - D/3



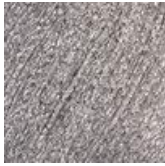
Armé is an elegant and brilliant yarn that enchants every day. Ultra-thin and lightweight, it is perfect for combining with other yarns in knitting, adding a touch of luxury and luminosity to any creation. Its metallic effect will make each garment truly unique.



AVAILABLE COLORS



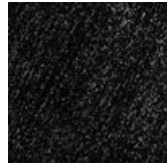
1011



1020



1040



1170



1260



1500



1500N



1800

CLOTHING CARE



DRYING
ON A
FLAT
SURFACE
(LYING
DOWN)



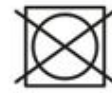
WASH BY
HAND



DRY CLEANING WITH
ALL SOLVENTS
EXCEPT
TRICHLOROETHYLENE
OR
TRICHLOROETHYLENE



DO NOT
BLEACH



DOES NOT
WITHSTAND
TUMBLE
DRYING



DO NOT
IRON