

**DIFFICULTÉ** = Intermédiaire



ÉCHANTILLON

POINTS UTILISÉS

ABBREVIATIONS

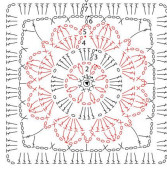
MESURES

PROCÉDURE

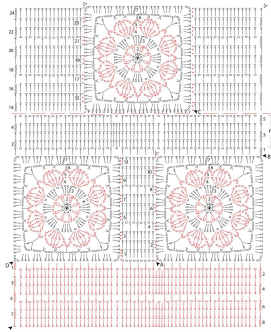
GALERIE PHOTOGRAPHIQUE



Schema 1: piastrella



Schema 2: merica



Legenda

- ▲ inizio
- △ fine
- + cattedralla
- m. bassissima
- > m. bassa
- | mezza m. alta
- ⊥ m. alta
- ⊖ 2 cat e 1 m. alta chiuse ins. nella stessa m.
- ⊖ 2 m. alte chiuse ins. nella stessa m.
- ⊖ 3 m. alte chiuse ins.
- ↳ gruppo a Y