

DIFFICULTÉ = Intermédiaire



ÉCHANTILLON

POINTS UTILISÉS

ABBREVIATIONS

MESURES

PROCÉDURE

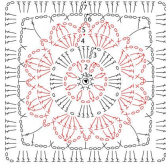
GALERIE PHOTOGRAPHIQUE



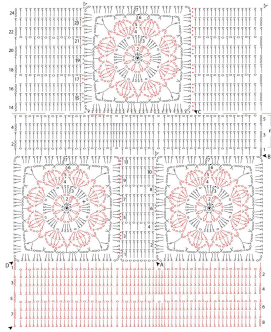


LAINES
du NORD®

Schema 1: piastrella



Schema 2: merica



Legenda

- ▲ inizio
- △ fine
- cella
- m. bassissima
- m. bassa
- mezza m. alta
- m. alta
- 2 cat e 1 m. alta chiuse ins. nella stessa m.
- 2 m. alte chiuse ins. nella stessa m.
- 3 m. alte chiuse ins.
- ↳ gruppo a Y