

DIFFICULTÉ =



ÉCHANTILLON

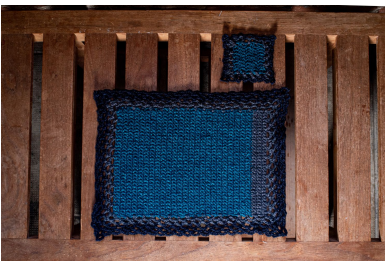
POINTS UTILISÉS

ABBREVIATIONS

MESURES

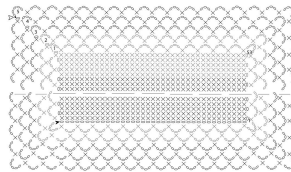
PROCÉDURE

GALERIE PHOTOGRAPHIQUE

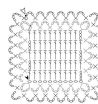




Schema 1: tovaglietta



Schema 2: sottobicchiere



Legenda

- ▲ inizio
- fine
- catenella
- m. bustarella
- × m. bassa
- 1 m. bassa, 5 cat. e 1 m. bassa nella stessa m.
- ⊥ mezza m. alta
- | m. alta