

DIFFICULTÉ =



ÉCHANTILLON

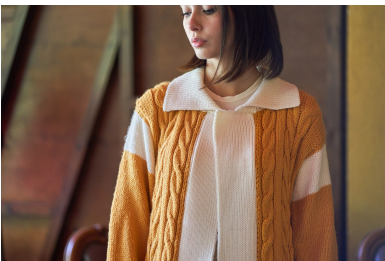
POINTS UTILISÉS

ABBREVIATIONS

MESURES

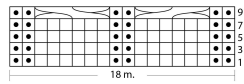
PROCÉDURE

GALERIE PHOTOGRAPHIQUE

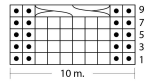




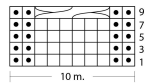
Schema A: motivo a 2 trecce




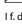
Schema B: treccia incrociata a sinistra



Schema B: treccia incrociata a destra



Legenda

- 1 m. a dir.
- ◻ 1 m. a rov.
-  6 m. incrociate a destra
-  6 m. incrociate a sinistra

I f. dispari sul LD, si leggono da destra verso sinistra
 Nei f. pari sul LR, non rappresentati nello schema,
 lav. le m. come si presentano.

Per ogni schema rip. dal 1° al 10° f. fino a raggiungere la lunghezza necessaria