

DIFFICULTÉ =



ÉCHANTILLON

POINTS UTILISÉS

ABBREVIATIONS

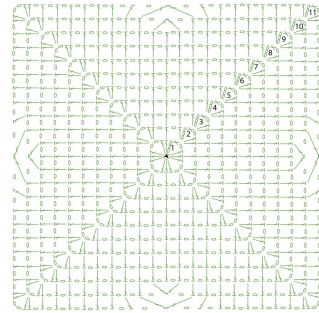
MESURES

PROCÉDURE

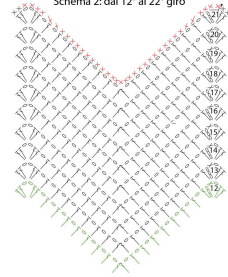
GALERIE PHOTOGRAPHIQUE



Schema 1: dal 1° all'11° giro



Schema 2: dal 12° al 22° giro



- Legenda
- ▲ inizio
 - laterella
 - m. bassissima
 - ↑ m. alta
 - ∧ 2 m. alte chiuse ins.