

DIFFICULTÉ = Facile



ÉCHANTILLON

POINTS UTILISÉS

ABBREVIATIONS

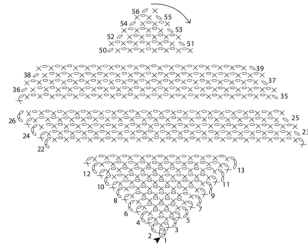
MESURES

PROCÉDURE

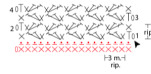
GALERIE PHOTOGRAPHIQUE



Schema 1: pannello corda a punto archetti sfalsati



Schema 2: pannello fucsia a punto ventaglietti



Schema 3: pannello arancio a punto archetti sfalsati



Legenda
 ▲ inizio
 △ fine
 - catenella
 + m. bassissima in costa davanti
 × m. bassa
 † mezza m. alta
 (1 m. bassa, 1 mezza m. alta, 1 m. alta)
 nella stessa m. di base