

**DIFFICULTÉ** = Difficile



ÉCHANTILLON

POINTS UTILISÉS

ABBREVIATIONS

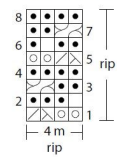
MESURES

PROCÉDURE

GALERIE PHOTOGRAPHIQUE



Punto traforato (modulo di ripetizione)

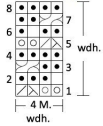


Legenda

- 1 dir
- 1 rov
- ⊙ 1 Get
- ⊗ 2ins
- ⊘ 1 acc
- ⊚ 1/1TD

If dispari (LD) si leggono da destra a sinistra  
If pari (LR) si leggono da sinistra a destra

Lochmuster (Wiederholungsmodul)

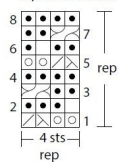


Legende

- 1 re.
- 1 li.
- ⊙ 1 U
- ⊗ 2ins
- ⊘ 1 Überzug
- ⊚ 1/1TD

Die ungeraden R. (RS) werden von rechts nach links gelesen  
Die geraden R. (LS) werden von links nach rechts gelesen

Open-work stitch (repetition module)



Key

- k1
- p1
- ⊙ yo
- ⊗ k2tog
- ⊘ skp
- ⊚ 1/1 RC

Read the odd rows (RS) from right to left  
Read the even rows (WS) from left to right