

DIFFICULTÉ = Difficile



ÉCHANTILLON

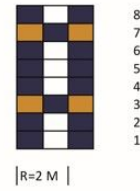
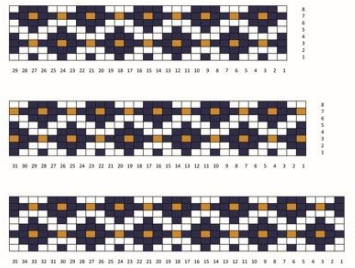
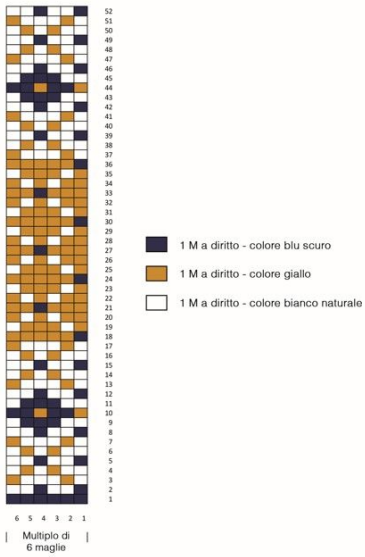
POINTS UTILISÉS

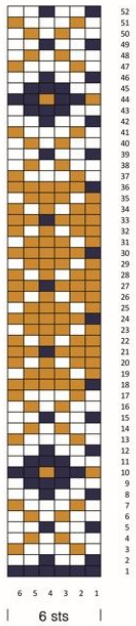
ABBREVIATIONS

MESURES

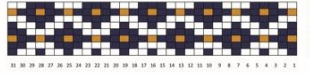
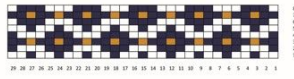
PROCÉDURE

GALERIE PHOTOGRAPHIQUE

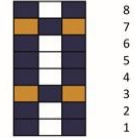




- Dark blue k1
- Yellow k1
- Natural white k1

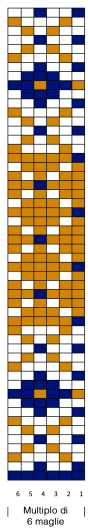


- Dark blue k1
- Yellow k1
- Natural white k1



|R=2 sts|

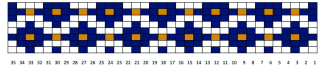
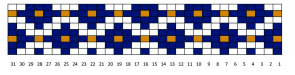
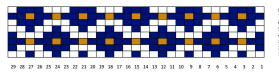
- Dark blue k1
- Yellow k1
- Natural white k1



Zählmuster 1

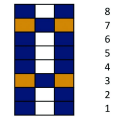
- 1 M a diritto - colore blu scuro
- 1 M a diritto - colore giallo
- 1 M a diritto - colore bianco naturale

Zählmuster 2



- 1 M a diritto - colore blu scuro
- 1 M a diritto - colore giallo
- 1 M a diritto - colore bianco naturale

Zählmuster 3



|R=2 M|

- 1 M rechts in Dunkelblau
- 1 M rechts in Gelb
- 1 M rechts in Creme