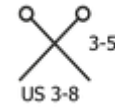
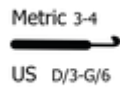


CASHSILK LIGHT

COMPOSIZIONE: 68% Lana Merino 16 microns, 22% Seta, 10% Cashmere

GOMITOLO: e 25 grs. - 145 mts.



Cashmere, merino e seta: una combinazione di fibre nobili per un filato elegante, morbido e leggerissimo, che regala un comfort vellutato ogni giorno. **Cashsilk Light** è indicato per maglie, stole e scialli ed esalta la morbidezza e la leggerezza grazie al suo effetto garzato.



COLORAZIONI DISPONIBILI



3000



3002



3010



3011



3012



3020



3021



3022



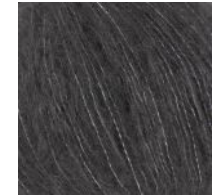
3031



3041



3042



3050



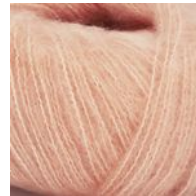
3051



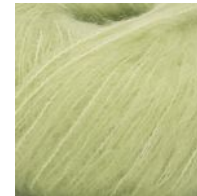
3052



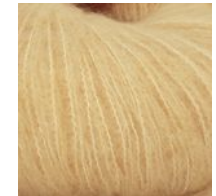
3100



3101



3102



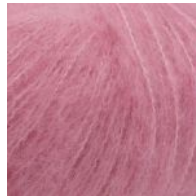
3103



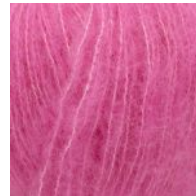
3200



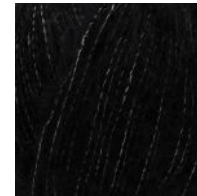
3202



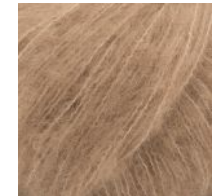
3203



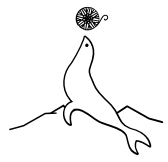
3204



3205



3207

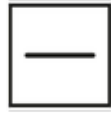


LAINES
du NORD®

CURA DEL CAPO



A MANO



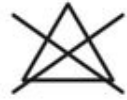
ASCIUGATURA
SU
SUPERFICIE
PIANA
(DISTESO)



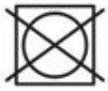
LAVAGGIO A
SECCO CON TUTTI
I SOLVENTI,
ESCLUSO IL
TRICLOROETILENE
O TRIELINA



NO
MULESING



NON
CANDEGGIARE



NON
SOPPORTA
L'ASCIUGATURA
IN TAMBURO



NON STIRARE